



University of
Sunderland

International
Prospectus 2024-25

**COME
HERE.
GET
MORE.**



GET THE CITY AND THE SEA

Go straight from class to the coast



A CAREER-DEFINING TOP 50 UNIVERSITY

The Guardian University Guide 2023

GET LEARNING IN THE REAL-WORLD

WITH

VOLUNTEERING
PLACEMENTS
MENTORING

70%

OF OUR RESEARCH WAS
RATED
WORLD-LEADING OR
INTERNATIONALLY
EXCELLENT

Research Excellence
Framework 2021

A WORLD CLASS EDUCATION

**FIVE STAR RATING IN
TEACHING, EMPLOYABILITY,
INCLUSIVENESS AND FACILITIES**



According to QS Stars World University Ranking 2023

CONTENTS

| | |
|--------------------------------------|----|
| Welcome | 04 |
| Our University | 06 |
| A Global University | 12 |
| Preparing Your For Employment | 16 |
| Career Opportunities | 18 |
| Social Responsibilities | 28 |
| Our City | 30 |
| Accommodation | 44 |
| Student Life | 46 |
| International Alumni | 53 |
| Our Reputation | 54 |
| Our Academics | 56 |
| English Skills | 58 |
| Cambridge Education Group Programmes | 60 |
| Scholarships and Fees | 61 |
| Entry Requirements | 63 |
| How to Apply | 64 |
| Meet the People of Sunderland | 68 |
| Course Listing | 73 |
| Your Local Contact | 80 |

LONDON



SUNDERLAND



WE'RE LOCAL,
NATIONAL AND GLOBAL

HONG KONG



WE'RE IN THE TOP 20%

of UK universities for
supporting local growth

Knowledge Exchange Framework 2022

GET A PROFESSIONS-FACING COURSE

that leaves you

SKILLED, CONFIDENT, AND ON TRACK
IN YOUR CHOSEN CAREER

GET A FUTURE-SHAPING CAREER-DEFINING HORIZON-SHIFTING UNIVERSITY

Greetings from the University of Sunderland!

The University of Sunderland takes pride in being a place where dreams begin, and lives are changed. We seek to equip our students with the knowledge, skills, and experience to prepare them for work – and for life.



Indeed, our Chancellor from November 2023, Leanne Cahill – Chief Executive Officer of retail company, Bravissimo – is a University of Sunderland graduate, demonstrating that our students go on to achieve great things.

How do we do make that happen? It's simple; through our outstanding and innovative teaching, our cutting-edge facilities, and a team of academics and professional support staff who put you, and your needs, at the heart of all we do.

Whether it's helping secure your ideal career or receiving a helping hand from our highly skilled wellbeing team, we aim to support you, both in and out of the lecture theatre, laboratory, or seminar room.

Even better, our support to students is evolving with the times. With the cost-of-living crisis affecting people across the country, we have increased hardship funding for students, and provide extensive financial and practical support on managing money.

While accommodation costs in the north-east of England remain more affordable than in other parts of the country, Sunderland is a city on the 'up.'

It is growing, prospering, attracting new investment and welcoming more and more people every day from across the country and the world.

In fact, we are now a University with over 27,500 students in our campuses in Sunderland, London, and Hong Kong and with global partner universities and colleges, as well as those who study online with us.

But we remain a university on a small enough scale to allow you to feel more than just a name or a number. Rather, you are someone who really matters to us.

Our progress has been recognised in the Guardian University Guide 2023 as we appeared in the list of the Top 50 UK universities. This reflects the outstanding work done by students and staff over recent years.

So, the message is simple – come and join us!

SIR DAVID BELL KCB DL
Vice-Chancellor and Chief Executive

Watch our 'Welcome
to the University'
video



COME HERE. GET MORE.

So you're thinking of studying in the UK at the University of Sunderland. This could be a life-changing decision.

Students from over 100 countries call Sunderland home and our qualifications are recognised all over the world. Your time here will shape your life and career, opening up opportunities for you globally.

As well as finding a full list of courses, we'll tell you everything you need to know about our first-class facilities, accommodation options and support networks – plus all the amazing things going on in our friendly campuses.

This is a University that's bursting with opportunity. So wherever in the world you're coming from, and wherever you want to go, we can help you get there.

READY TO APPLY?

Go to sunderland.ac.uk, search for your course and click 'Apply Now' or apply through your local agent.

TO FIND OUT MORE

Phone **+44 (0)191 515 3000**

Email international.office@sunderland.ac.uk

Live Chat on our website sunderland.ac.uk

OUR FUTURE IS BRIGHT

Over the next ten years, we are investing £250m in our facilities. Phase one will see a major redevelopment of The Sir Tom Cowie Campus to create a modern library and student centre, improvements in Computer Science and Engineering and an International Business School. We will see

improvements in the Faculty of Business, Law and Tourism and the Faculty of Technology. These will include a moot court, esports and market research lab and a tech-based, collaborative workspace. We will also move to a new campus in London, which will significantly improve the space and facilities we offer students who choose to apply and study there.

Phase two will build on previous investment in health and health-related innovation at the University's City Campus, including the creation of the Sunderland Health Innovation Zone and a new sports ground.

Watch
'Our campuses' video



GET A CAMPUS YOU WON'T WANT TO LEAVE

Our courses and facilities are spread across two campuses, one in the heart of the city, and the other on the banks of the River Wear. Whether you study by the sea or in the centre of the city, our excellent amenities mean you can make the most of Sunderland student life.

CITY CAMPUS

Right in the heart of Sunderland – with everything you could need right on the doorstep.

SUBJECT AREAS:

Health Sciences and Wellbeing – Medicine, Nursing, Pharmacy, Pharmaceutical and Cosmetic Sciences, Psychology, Sport and Exercise Sciences, Biomedical Sciences, Physiological Sciences

Creative Arts – Fine Art, Design, Music, and Performing Arts

LOCATIONS

City Campus houses CitySpace, our iconic sports and Students' Union social facility, The John Dawson Sciences Complex and Helen McArdle House. It also houses the newly renovated Murray Building which offers teaching and faculty space for our health and science related courses. You'll also find Library@Murray located on the lower level within the same building. Other buildings include Priestman Building, and Hope Street Xchange, a contemporary workspace for innovation-led businesses and entrepreneurial student projects.



The QS Stars rating system is an international standard identifying excellence and diversity among the world's universities. Visit qs.com for more information.

FROM RESEARCH TO REALITY

In 2023, the University announced the creation of the John Dawson Drug Discovery and Development Research Institute on its City Campus, aiming to help improve millions of people's lives across the world. It will play a key role in turning laboratory research and innovation into life-changing therapies for clinical practice, working closely with the NHS and pharmaceutical industry.



Mock ward,
Helen McArdle House

'Living Lab and Helen
McArdle House' video



**THE JOHN DAWSON SCIENCES COMPLEX/
THE ANATOMY CENTRE/MURRAY HEALTH**

Home to our Schools of Medicine, Pharmacy, Nursing, Midwifery and a full range of science and health-related subjects, these outstanding multi-million-pound, industry-compatible science and health facilities are complete with a unique Living Lab. They include:

- Industry-standard research and teaching laboratories
- Anatomy facilities for both 'dry' and 'wet' anatomy
- Ultrasound equipment
- Cutting edge testing equipment across specialisms
- Academic links with world-leading organisations including Pfizer and GlaxoSmithKline
- A home for Paramedic Science and Psychology courses
- Newly redeveloped library and study spaces and bookable rooms
- A state-of-the-art maternity simulation suite for training in a realistic yet safe environment



HELEN MCARDLE HOUSE

Home to Nursing, we've recently put a multi-million-pound investment into this complex, adding:

- Mock wards
- Consultation rooms
- Mock patient-transfer suite
- Patient diagnostic suite
- State-of-the-art simulation facilities
- Helen McArdle Nursing and Care Research Institute
- Sport Rehabilitation Suite

LIVING LAB

- Our Living Lab reflects contemporary care provision settings and is made up of:
- Specialist laboratories
- Pharmacy dispensaries
- A hi-fidelity immersive simulation suite
- Objective structured clinical examination suite
- Debrief room with integral cameras



HELEN MCARDLE NURSING AND CARE RESEARCH INSTITUTE

The Helen McArdle Nursing and Care Research Institute focuses on developing and delivering high quality applied health care research and knowledge exchange studies. We work closely with external partners in the NHS, local authority, voluntary, commercial, and wider health and care settings, to identify and solve real-world issues. The findings of our work are applied to healthcare practice and policy to make a difference to patients, populations, and professionals, and contribute towards supporting our students to prepare for careers in health and care.



GET MORE:

“They helped me with accessing equipment that was suited to my learning style and even on placement we had support from the University.”

KIERAN MURRAY
BSc (Hons) Adult Nursing Practice
Community Nurse, Newcastle-upon-Tyne Hospitals, NHS Foundation Trust

A visit to an open day at the University of Sunderland gave Kieran the confidence to pursue his nursing career.

“ I had always wanted a career in nursing but felt I wasn’t academic enough. However, after speaking to the lecturers who teach on the course, I was given the confidence to leap into nursing and university-life.”

Kieran really enjoyed his placements and working in the mock hospital wards with the simulation manikins.

He also received support from the Disability Support team for his dyslexia.

“ I would absolutely recommend the University of Sunderland to future students, based on the experiences I have had. ”

Now working as a Community Nurse, Kieran credits the University of Sunderland with allowing him to experience many different elements of nursing and helping him excel in his current role.

THINK COURSE
THINK CAREER
THINK SUNDERLAND



Hope Street Xchange

HOPE STREET XCHANGE

This is the University's dedicated centre for enterprise and innovation. A vibrant hub of innovative and creative entrepreneurs, start-ups and SMEs, it offers state-of-the-art office space and exists to support small businesses to grow and develop. It's also home to FabLab Sunderland, the north-east's first digital fabrication laboratory, and the Enterprise Place, which supports student and graduate start-ups. It comprises of 36 fully managed workspaces offering a mix of offices and multi-purpose units.

PRIESTMAN BUILDING

Discover state-of-the-art equipment in an environment filled with creative thinkers at the historic Priestman building.

- Three art and design galleries
- Art, design and fashion studios
- Wood, metal and print workshops
- Performing arts spaces
- Wacom Cintiq design studio
- Dance, Music and Performing Arts students also have access to the amazing new £18 million Fire Station Auditorium, in the city centre

FACILITIES LINKED TO UNIVERSITY OF SUNDERLAND

Dance City Newcastle

We offer BA (Hons) Professional Dance in partnership with north-east dance organisation Dance City based in Newcastle.

Northern Academy of Music Education

We also offer BA (Hons) Modern Music Industries in partnership with Northern Academy of Music Education, which is based in Sunderland's Cultural Quarter.

THE GATEWAY

One of the busiest buildings on City Campus, this is where you will find our supportive Gateway Enquiries team. This team are the first point of contact for enquiries, they can offer advice and direct you to our other support services including:

- Student Financial Guidance team
- Student Journey team
- Wellbeing
- Chaplaincy
- Disability Services team
- Student Administration

We also have a vibrant cafe and social space in the Gateway which offers affordable food and drinks to buy throughout the day.

For support from the moment you join us until you graduate, visit our student support page at sj.sunderland.ac.uk/student-information/

CITYSPACE

Our sports facility at the heart of City Campus, offers state-of-the-art fitness equipment and world-class athlete support including:

- Six-badminton-court sports hall
- Technogym fitness suite
- Functional training spaces
- Sports massage and injuries centre
- Indoor climbing wall
- Event and exhibition space
- Dining, meeting, and social area

You'll also find SU @ CitySpace, the Students' Union. The space includes a pool table, games area and a merchandise shop as well as soundproof pods that you can use to study or relax. In addition, the Union organise regular social events throughout the year.

CITY CAMPUS LIBRARIES

Library@Murray offers a quiet place to study, a range of books and publications for your course and IT facilities, including laptop loans. Our library team also offer study skills support.

Library@Pasteur is our dedicated library for the Faculty of Health Sciences and Wellbeing, located in The John Dawson Sciences Complex.

THE SIR TOM COWIE CAMPUS

An impressive riverside campus within easy reach of the city and miles of beautiful beaches.

SUBJECTS:

Business – Business and Management, Law, Hospitality (incl. Events, Esports Event Management, Aviation and Tourism)

Creative Arts – Glass and Ceramics, Animation, Photography, Journalism, Social Media, Media Technology – Engineering, Computer Science

Education and Social Sciences – Teacher Training, Social Work, Community and Youth Work Studies, Criminology, Policing, Health and Social Care, and Childhood Studies

LOCATIONS

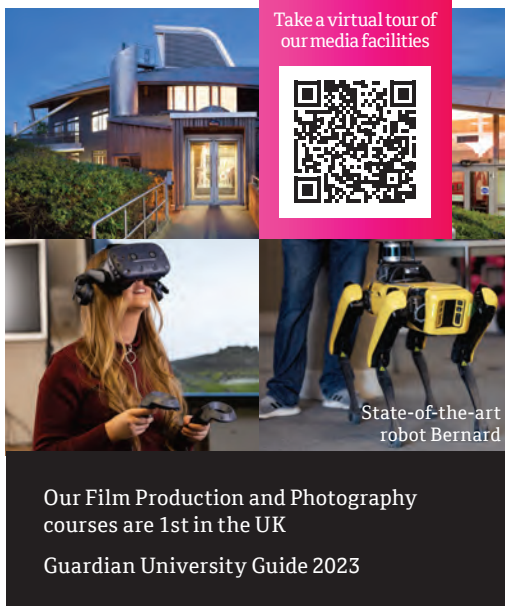
This campus includes the David Goldman Technology Centre, David Puttnam Media Centre, Reg Vardy Centre, Wearside View, the Interfaith Chaplaincy centre, Prospect Building (home to St Peter's Library), and the National Glass Centre, as well as our outdoor multi-use games area (MUGA).

DAVID PUTTNAM MEDIA CENTRE

Packed with industry-standard media equipment and technology, the David Puttnam Media Centre is home to the subjects of Journalism, TV, Radio, Media and Film Production, Animation, Film Studies and Cultural and Communications Studies.

With production facilities including our new 4K-UHD virtual studio, new studio lighting and our refreshed Spark Sunderland radio studio, it's no wonder that the centre is also the headquarters of local television station Local TV Tyne & Wear, as well as a base for a team of BBC journalists. If you are interested in a career in Radio, then join our award-winning radio station Spark which is run by our students.

It is also home to the mediaHUB – an innovative digital publishing and broadcasting space which houses our three student digital publications: Spark, Fashion North and SportsByte.



Take a virtual tour of our media facilities

State-of-the-art robot Bernard

Our Film Production and Photography courses are 1st in the UK

Guardian University Guide 2023

- BROADCAST-STANDARD TV STUDIOS
- DIGITAL AND POST-PRODUCTION FACILITIES
- LOCATION RECORDING KITS
- CINEMA SPACE
- FULLY EQUIPPED RADIO STUDIOS
- VOICEOVER BOOTHS
- INDUSTRY-LEADING SOFTWARE
- WACOM CINTIQ DESIGN STUDIO
- 4,600M² OF STUDIOS, WORKSHOPS AND EDITING SUITES

Acclaimed independent production company, Fulwell 73, have recently set up a new northern production base at the University to add to their offices in LA and London, giving you amazing opportunities. As well as employing our graduates, they will focus on developing new programming, nurturing further local talent and discovering new creators.

Read page 83 to find out about Media graduate James Longman, who is now an award-winning producer in LA.

MAKING SUNDERLAND SMARTER

A 5G test lab is currently being developed on The Sir Tom Cowie Campus, meaning the University is set to become one of the UK's first 5G-enabled universities, putting it at the forefront of smart education.

Students will benefit from technology enhanced teaching environments and cutting-edge research opportunities for uses of 5G and the Internet of Things (IoT) in key local sectors, including manufacturing and health care. It will also open up further digital employment possibilities for graduates. Career boosting, faster.



The Sir Tom Cowie Campus

THE SIR TOM COWIE CAMPUS LIBRARIES

St Peter's Library and Library@David Goldman are both located at The Sir Tom Cowie Campus. These offer dedicated study spaces, specialist books for your courses and IT facilities.

DAVID GOLDMAN TECHNOLOGY CENTRE

Home to the Faculty of Technology and the Northern Centre of Photography, we've been busy investing in this building to give you the best facilities, including:

- Black and white, alternative print and colour chemical darkrooms
- Dedicated digital darkroom and print centre and studios
- Video, sound editing and screening facilities
- Industry-standard laboratories and workshops
- State-of-the-art metrology suite
- Specialist engineering software
- Investment in state-of-the-art robotics like Boston Dynamics' four-legged robot 'Bernard'
- New library facilities with study space and bookable rooms
- The Digital Incubator offers advice and support to students and graduates with digital skills and who are considering starting their own business
- An interactive 'igloo' and a fully equipped VR and AR lab

REG VARDY CENTRE

A self-contained teaching and learning facility which houses the disciplines of Business, Finance, Law and Tourism. It's also home to the University's Marketing Hub, as well as the Law Clinic, supporting you with real-world career practice. Read more about these on page 26.

WEAR SIDE VIEW

Home to the Faculty of Education and Society. Recently refurbished, Wearside View offers spacious classrooms for teaching and learning, as well as open plan social space for collaborative and independent learning with a mixture of learning spaces.

PROSPECT BUILDING

Situated on the bank of the River Wear, the student-focused Prospect Building offers a social space for you to meet up with uni friends; St Peter's Library - extensive resources for subjects taught at The Sir Tom Cowie Campus; catering facilities to suit all tastes; Gateway Enquiries team to support you with any type of enquiry; as well as Careers, Employability and Enterprise team.

NATIONAL GLASS CENTRE

National Glass Centre is a centre of excellence in Glass and Ceramics, as well as a visitors centre where students can display their work. The building has a range of facilities including studio spaces, galleries and exhibitions, and expert demonstrations.



GET A GLOBAL UNIVERSITY

OUR REPUTATION EXTENDS WELL BEYOND THE NORTH-EAST OF ENGLAND

As a major recruiter of overseas students in the UK, you'll be learning alongside students from over 100 countries. The same high-quality courses offered at Sunderland have been delivered across the world for decades – and this global view will be a critical element of your degree.



OVER 100 NATIONALITIES ARE REPRESENTED BY OUR POPULATION OF OVER 27,500 STUDENTS, WHO STUDY WITH US ACROSS OUR CAMPUSES IN SUNDERLAND, LONDON AND HONG KONG, AND WITH PARTNERS WORLDWIDE.

Wan Chai district,
Hong Kong

HONG KONG

With a substantial track record of educating students from Asia, our links with our Asian alumni became even stronger when we established a presence in this hugely influential region. The University of Sunderland's campus in the Wan Chai district of Hong Kong firmly places us at the heart of one of the region's most exciting cities, where we deliver a large range of Business and Tourism courses. To find out about applying and studying at our Hong Kong campus, visit the website below.

Go to sunderland.edu.hk

Canary Wharf, London



LONDON

Situated right at the heart of London's vibrant financial district, our London campus offers courses in Business, Management and Finance, Tourism, Nursing and Health, Engineering, and English for Academic Purposes to UK and International students. To find out about applying and studying at our London campus, visit the website below.

Go to london.sunderland.ac.uk

A GLOBAL UNIVERSITY

PROFESSIONS-FACING

Developing highly-skilled, professional, work-ready graduates through our tailor-made programmes, alongside career-focused teaching and learning, is at the heart of all we do.

Whether it is doctors, nurses, teachers, engineers, designers, journalists, computer scientists or business leaders, we are training students who help to shape our everyday lives, communities and workplaces, not just here in the north-east but around the globe.

Many of our courses are professionally accredited by bodies including The British Psychological Society, Chartered Institute of Marketing, Institution of Engineering and Technology, Chartered Institute of Management Accountants and the National Council for the Training of Journalists. This gives you a unique degree that puts you in the middle of their industry.

← **200,000 GRADUATES
MAKE UP OUR
GLOBAL ALUMNI**

WORLD-LEADING

Sunderland is recognised internationally as a leading university, receiving five stars for teaching, inclusiveness, employability, and facilities in the QS World University Rankings 2023.

OUR CONTRIBUTION TO SOCIETY

Data released in 2022 from Research England's Knowledge Exchange Framework revealed the critical and multi-million-pound impact the University has on the region, including being:

- in the top 20% of universities nationally for local growth and regeneration
- in the top 20% of universities nationally for research partnerships
- in the top 20% of universities nationally for Innovate UK income
- in the top 40% of universities nationally for graduate start ups

University of
Sunderland in
London students, at
Canary Wharf



**70% of our research
was rated world-
leading or
internationally
excellent**
in the research excellence
framework 2021



THOMAS CEPE

Engineering graduate

Director, Carbon Core Engineering, Czechia
Previously, Senior Consultant at Ferrari
(Formula One), Italy

“ I chose the University of Sunderland because of its facilities and its connections with industry. I enjoyed my course which was very technical and practical, and the facilities allowed me to turn my designs into a reality. The general support, standard of lectures and workshops was at a high level.

I loved that Sunderland is close to the coast, and Newcastle and Durham. I made friends with other international students and learnt about different cultures. The Students' Union's sport and night life allowed me to socialise with people outside of my course.

My placement fuelled my desire to pursue a career as a Design Engineer in motorsport. I worked for Ferrari for seven years specialising in chassis design for F1 cars and I now run my own engineering company. ”

Get More:

“A highlight of my studies was undertaking my work placement in motorsport. After that, my career choice was easy.”

THINK COURSE
THINK CAREER
THINK SUNDERLAND

COME HERE. GET THE CAREER YOU WANT.

A UNIVERSITY THAT'S AS AMBITIOUS AS YOU ARE

Here at the University of Sunderland we want to help you see your potential, achieve life-changing success, and make a society-shaping impact.

We help students across the University become well-rounded individuals with the skills and experience needed for their chosen career when they graduate.

We ensure employability and career-specific teaching is embedded across our University in many ways.

Through our partnerships with alumni, businesses, and community organisations you

can experience how your learning will translate to life after university.

Fancy setting up your own business? We can support you to set up your own business, collaborate with freelancers and take part in entrepreneurial challenges.

Our courses will reshape your perceptions of careers, employability, and enterprise, through traditional learning, placements, and work-experience. As a result, you'll build confidence and create values you'll take with you long after graduation.

REAL-WORLD EXPERIENCE

Placements and other forms of work integrated learning help to set you apart from the competition when you leave university, giving you that

competitive edge in the graduate jobs market. Many of our courses offer a placement element, whether it's a traditional placement year or a shorter, flexible placement opportunity completed within the context of a particular module. Most placements contribute towards credits for your final grade too. The

University has strong links with local, regional, national and international industries which will support you in developing the skills you need to succeed in your career.



THINK COURSE
THINK CAREER
THINK SUNDERLAND

RAUL FERESTEANU

BSc (Hons) Computer Science

“ The University is a very friendly and warm environment which makes you feel welcomed right away and they encourage students to meet, socialise and have fun.

I did a placement year which greatly improved my technical and social skills. I gained experience that will give me an edge when applying for future jobs. ”

Get More:

“Being offered a position at Unified Software before graduating. In the future I'd like to study a Masters.”

BOOSTING YOUR CONFIDENCE AND EMPLOYABILITY



OPPORTUNITIES AT YOUR FINGERTIPS

Your time at university will shape what you do for the rest of your life.

Our courses at the University of Sunderland are career-focused and professions-facing, ensuring you have a head-start in the workplace when you graduate. Our courses are co-designed by employers, affiliated with professional bodies and our lecturers are closely linked to their sectors – many of them practitioners in their own right. Our facilities and equipment are industry-standard, giving you a seamless transition into the world of work.

A HELPING HAND WITH YOUR CAREER

The University of Sunderland are here to help you stand out from the crowd. Whatever your career ambitions, we will give you the opportunities and support you need to become a successful graduate with all the skills and experience top employers are looking for.

- Advice and guidance on your career options
- Support with your CV, applications, and interviews
- Access to our online vacancy service where you will find work experience, volunteering, placement, and graduate opportunities
- Virtual and on-campus employer events and a Mentoring Scheme
- Recognition through the Sunderland Professional Award
- Graduate Recruitment and Placement Fairs
- Student Jobs and Volunteering Fairs

Before you join our university community, we will link you with a more experienced student already familiar with your chosen subject area to help you settle in. As part of your second or third year, you too could become a student and get formal recognition for your commitment to add to your CV.

ENHANCE YOUR EMPLOYABILITY

There's a world of opportunity on offer at the University of Sunderland which will enhance your university experience, offer additional accreditation to your qualification, and set your CV apart, including:

- Student Ambassador Scheme
- Spark Sunderland, the University's radio station, TV station and magazine
- The Mooting and Debating Society
- A huge range of clubs and societies
- Student Mentoring

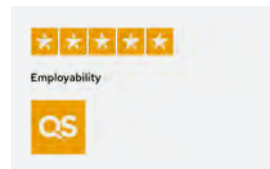
Before you join our university community, we will link you with a more experienced student already familiar with your chosen subject area to help you settle in. As part of your second or third year, you too could become a student mentor and get formal recognition for your commitment to add to your CV.

PROFESSIONAL MENTORING SCHEME

You'll be matched with a mentor working within your field of interest who will support you with one-to-one online meetups, give valuable insight into what they do and how they got there and help you develop an understanding of the skills you'll need to be successful.

Email: sunderlandfutures@sunderland.ac.uk

Call +44 (0)191 515 2920



The QS Stars rating system is an international standard identifying excellence and diversity among the world's Universities. Visit qs.com for more information.



GET A TASTE OF YOUR POTENTIAL

If you're a University of Sunderland graduate, then you don't have to look very far to find work. From technology to financial services, to health sciences and advanced manufacturing, the city and the wider north-east is home to a host of thriving businesses, from fast-growing start-ups to international corporates. You can also tap into our excellent industry connections to find internships or placements.

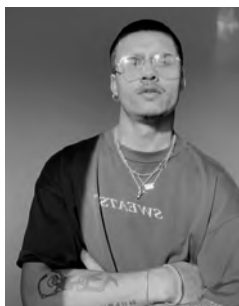
Hundreds of millions of pounds have been spent on the development of new business hubs in Sunderland over recent years, helping attract a whole host of businesses to the city, particularly around its key sectors.

SY AHMED

BA (Hons) Fashion Product and Promotion

Sy Ahmed, an entrepreneur who made his name in London, and featured in a recent edition of Vogue Italia chose to return to his home City of Sunderland to study his degree.

“ I picked up my first Vogue magazine at just 15. I'm sure people thought I was strange, but I didn't care.



At the time, I was interested in the high-end side of fashion and I'd do whatever job I could to save enough money just to buy one piece of clothing. ”

While studying, he juggles working for fashion houses, uni work, as well as just launching his own brand Supremetosociety, which is already gathering a huge following.

GET SUPPORT TO SUCCEED

INTERESTED IN STARTING YOUR OWN BUSINESS?

It might seem like a daunting prospect, but it can be an exciting process. We have all the expertise you'll need to see your business grow from an idea to an income generator.

We have a long history of supporting our enterprising students and graduates and have even been recognised in the 2022 Knowledge Exchange Framework as being in the top 40% of universities nationally for graduate start-ups.

Whether you want to start a freelance or self-employed career, set up a limited company with an idea to scale and grow, or have a business idea driven by a social impact, we have the tailored support available. Through the Enterprise Place and Digital Incubator, we can help you take the first step on your entrepreneurial journey.



ZOE BEATY BA (Hons) Journalism Freelance Writer and Editor

Zoe graduated with an industry relevant skillset in magazine and news journalism and a full set of NCTJ qualifications which helped her to secure her first job with Grazia.

“Push yourself harder than you really want to, get as much hands on work experience, and speak to your tutors – steal as much of their knowledge as you can whilst you still have them.”

She is currently writing for the Sunday Times Style, Vogue, Telegraph Magazine, Grazia and Stylist.



The university is celebrating 100 years of teaching pharmacy



MIN NA EII, FROM BRUNEI
MPharm Pharmacy graduate
Advanced Pharmacist Practitioner,
South Tyneside and Sunderland NHS
Foundation Trust

“

Sunderland Pharmacy School is known as one of the best in the country and people from the region are very friendly. This put me at ease when making my decision to move to the UK.

The University prepares you properly for a career as a Pharmacist; I graduated with the right skills and knowledge to be successful. There is a good mix of students with diverse backgrounds and there is something for everyone.

In my current role I'm mainly based in the Acute Medicine ward where I go on ward rounds with Consultants and Junior Doctors prescribing the majority of patients' medications and acute treatments.

Get More:

“My proudest moment was securing my current role as the youngest Advanced Pharmacist in the department when everyone told me not to apply because they believed I was inexperienced.”

I'm interested in pursuing a role which looks at pharmacy sustainability and tackling carbon emissions from medicines and waste in the NHS. I'm also considering studying for a masters which would advance my career in the area I'm most interested in. ”

THINK COURSE
THINK CAREER
THINK SUNDERLAND



**FLORIAN HILDEBRAND,
FROM GERMANY**

**Mechanical Engineering graduate
Co-founder and Managing Partner
of Qualifyze**

Florian graduated at the University and believes studying in the UK equipped him with all the skills required in any business.

As co-founder of Qualifyze, they use a global digital network to help pharmaceutical companies manage quality and compliance in their supply chains.

“Historically, companies had to fly around the globe to inspect and audit their supplier facilities, but due to the pandemic this was not possible anymore.

By leveraging global networks and digital technologies, we were able to still perform these critical inspections for those companies by using local resources, removing the need for travel and converting to online auditing.”

Get More:

“Obviously we are not the heroes in the pandemic. Those people such as care workers, nurses and doctors are the real heroes. But it’s great that on a small level we’ve made a difference in supporting the supply chain.”

Covid-19 has dealt an unprecedented blow to global supply chains, but Florian feels that he, and his team, have helped Pharma companies bridge the challenges.

**THINK COURSE
THINK CAREER
THINK SUNDERLAND**



Get More:

“When I was awarded a first class honours, my employer celebrated my achievement by featuring my story in an edition of the hospital magazine.”

KEHINDE GLADYS BAWA, FROM NIGERIA

Nursing graduate

Operating Room Nurse, University of Abuja Teaching Hospital

“ I was given the opportunity to study a top-up degree through my current employer. I decided to study at the University of Sunderland as it came highly recommended by my colleagues and the staff at the UKEAS Education exhibition I attended while deciding on which institution to study at.

In my current role I coordinate the healthcare services for the surgical patients in my care.

I would recommend the top-up course to any nurse who has the right practical experience. Work hard and make use of the many learning-enhancing facilities available at this student friendly institution; such as the library, the campuses, the excellent accommodation, and transport links to and from both campuses.

The future I believe holds great prospects for me; I hope to pursue my interest in quality improvement and patient safety at postgraduate level. The continually evolving roles of the contemporary nurse is a great challenge but one that I’m willing to face head on.

Thank you University of Sunderland for this life-changing experience. ”

THINK COURSE
THINK CAREER
THINK SUNDERLAND



GET MORE:

“Successfully defending my PhD thesis and hearing those magical words from the examiners that I have achieved my PhD was a proud moment for me. Also not forgetting the graduation ceremony, and getting to celebrate with the rest of my family.”

DR JULIUS ONYANCHA, FROM KENYA

PhD Computer Science graduate
Owner of **Dataknead**

“ Dataknead is a start-up business that specialise in data analytics and machine learning tools to discover, learn, and make sense of data from different sources.

The Enterprise Place helped me to set up my own business; from the initial stages of writing a business plan, the start-up skills course, ongoing business advice, as well as information on funding opportunities. Dataknead were runners up for Santander Universities Enterprise Seed Fund Business Pitch.

I first heard about the University during an Expo Fair. I later enrolled as an undergraduate student, and then went on to complete my MSc and PhD at Sunderland.

The University is a life-changing community with a blended culture and inclusion for all.

The amount of data available on the web is growing rapidly and people are turning to intelligent driven activities. My focus is to steer Dataknead to be part of the journey, actively participate in research and development using emerging technologies.”

**THINK COURSE
THINK CAREER
THINK SUNDERLAND**



MICHAEL DITCHBURN
Graduate and employer
Operations Director, Mint Interactive



EMILY STODDART
BA (Hons) Business and
Marketing Management
**Social Media and Marketing Manager,
Mint Interactive**

“ My life-changing event was getting made redundant for the first time. I would never have jumped into starting my own business otherwise – I needed to be pushed!

It was 2017 when I set up my digital learning company, ThinkBiscuit Media, which grew to 14 people before we merged with another organisation and became Mint Interactive Solutions in 2021.

Since 2017, we've relocated several times in Sunderland – starting in the Sunderland Software Centre. We are currently located in The Commissioner's Building, right in the city centre.

The main part of the organisation has been headquartered in Sunderland since I started the business (and the subsequent merger). Over the years I've taken on many graduates from the University of Sunderland (including three graduate interns). I love what the University does to help graduates and they've helped us create a really talented, ambitious team here at Mint Interactive. They offer a lot of support to businesses, which is important, as well as ongoing training. ”

“ During my time at the University of Sunderland, I found the lectures to be extremely supportive and helpful. The modules I studied equipped me with the relevant knowledge and practice required for real-world business scenarios.

After I graduated, I applied for a marketing role through the Sunderland Graduate Internship Scheme who put me in contact with Michael and the team at ThinkBiscuit Media (now known as Mint Interactive). I was able to transition my marketing knowledge gained from my studies into a growing SME where I've since been promoted to Social Media and Marketing Manager. ”

THINK COURSE
THINK CAREER
THINK SUNDERLAND

GET THE OPPORTUNITY TO ENGAGE WITH EMPLOYERS

There are a variety of ways that you can engage with employers and learn from their experience and insights, so you can become the leaders and tomorrow makers of our societies and economies.

GET EMPLOYERS ON CAMPUS

Employers regularly join us on campus and online to talk about the graduate recruitment process, graduate schemes and to support our central careers offer and academic delivery via employability conferences.

GET CAREERS FAIRS

We organise three popular careers fairs across the academic year. This is a fantastic opportunity to learn more about placements, internships, volunteering, part-time jobs and graduate recruitment.

GET STUDENT OPPORTUNITIES

We offer a wide selection of opportunities ranging from volunteering, work shadowing, paid projects, support in finding a student job, professional mentoring, and the Sunderland Professional Award (SuPA) to help enhance your future employment prospects.

SOME OF THE CITY'S KEY EMPLOYERS INCLUDE:

Arriva, BAE Systems, Barclays, Berghaus, EDF Energy, EE, Hays Travel, Komatsu, Liebherr Cranes, More Than, NHS, Nike UK, Nissan, Ocado, Rolls Royce, Santander, Sunderland Software City, Gentoo Group, Paragon Group, Unipres.

EMPLOYERS IN THE WIDER NORTH-EAST INCLUDE:

Bellway, Caterpillar, Deloitte, GlaxoSmithKline, Greggs, Hitachi, Husqvarna, ITV, J. Barbour & Sons, Komatsu, Northern Powergrid, Northumbria Police, Procter & Gamble, Sage, Teleperformance, Tetley Tea, The Go-Ahead Group, Ubisoft, Vertu Motors, Parkdean Resorts, Home Group, Northumbrian Water, DFDS and Virgin Money.

We're constantly strengthening our relationships with local employers to offer you the best possible career opportunities – while at the University and beyond.

GET REAL-WORLD WORK EXPERIENCE

SUNDERLAND CREATIVE AGENCY

Sunderland Creatives Agency is a student-led business set up by the University in partnership with Creo Comms, a Sunderland-based communications consultancy that is overseeing students' work and providing authentic work experience.

Emily Butterfield, who studied BA (Hons) Illustration and Design and MA Design at the University, and now a graduate, has been working with the agency. She recently worked on a client brief for the Red Sky Foundation, delivering illustrations of their mascot to be used across marketing materials.

Emily said: “ I would definitely recommend students to get involved with the agency. It's a fantastic paid opportunity and allows you to experience what life after university could be like. It is helping to boost my confidence and communication skills with clients. ”



EMILY BUTTERFIELD
BA (Hons) Illustration and Design and MA Design

CAREER OPPORTUNITIES

DEVELOP YOUR ENTREPRENEURIAL SKILLS

If you want to develop entrepreneurial skills or have a potential business idea you would like to explore after graduation, the University is here to help you. We provide students and graduates with the opportunity to engage with exciting innovation challenges linked to the UN Sustainable Development Goals - which are the blueprint to achieving a better and more sustainable future for all.

THE MARKETING HUB

The Marketing Hub is vital in helping you develop your marketing and employability skills with real-life working situations and learning, as well as careers advice, masterclasses, and networking opportunities.

You will have the chance to enter exciting challenges, including The Pitch Challenge set by the Chartered Institute of Marketing, where you tackle a brief set by a leading brand. Also, the Greggs University Challenge, where students in the north-east have the chance to create Greggs' next marketing strategy.

We even set our own Marketing Hub Consultancy Challenge, giving you the task of addressing a real-life business challenge.

**THINK COURSE
THINK CAREER
THINK SUNDERLAND**

For those who want to explore a real-life business idea after graduation via the Graduate Visa route, we offer a range of advice, and mentoring to help take that idea from concept to creation.

The team delivers support across two professional co-working spaces which provide opportunities to collaborate with other like-minded people and businesses so you won't feel alone while you see your idea come to life.



KATIE STUBBS

BA (Hons) Screen Performance

Assistant Director for Coronation Street

Katie Stubbs, a recent BA (Hons) Screen Performance graduate, is already a Assistant Director (AD) on Coronation Street. Her soap experience started at Sunderland, spending her summer before her final year working as a AD on Emmerdale. Katie puts her success down to hard work and determination, but also to the support she received from the University of Sunderland. From being selected for the Lord Puttnam Scholars Scheme to receiving funding from the Development Trust Scholarship, all helped her to believe in herself.

THE LAW CLINIC

The Law Clinic is a chance for you to put theory into practice. In your final year, you will become a solicitor in our student law firm and work with real clients on real cases, gaining authentic experience that can set you apart in a crowded job market.

You will work with those who might struggle to afford or access legal services on a variety of cases, including divorce, residential housing, and immigration. Supported by experienced solicitors, you'll learn the processes and procedures of working in a law clinic, and sharpen your skills in conducting interviews, and writing professional legal advice.

John Edwards graduated from the University of Sunderland in Law, and now manages the clinic. He believes that developing skills in the real-world is key to unlocking your potential as a Law student. "Here, you're actually learning the practical implications of what you're studying and you can see the effects of that... You can't learn this sort of stuff from a textbook."



JAKE BOWMAN LLB (Hons) Law with Integrated Foundation Year

After a personal tragedy, Jake was determined to pursue a career in law. Having taken part in the National Citizens Scheme at The Sir Tom Cowie Campus, he knew he liked the riverside campus and applied for the LLB (Hons) Law with an Integrated Foundation Year.

“ My favourite part of the course was the opportunity to work in the Law Clinic on live client cases. This gave me invaluable skills and extra learning opportunities. ”

In his final year with us, Jake was awarded scholarships with Inner Temple and another institution to continue his studies. He said: “ I can say with honest conviction that my experience was enjoyable and extremely successful after achieving my results, and that there are no negatives. ”

Having graduated from Sunderland, Jake is on track to reach his goal of becoming a barrister and practicing criminal law with the Crown Prosecution Service.



OUR COMMITMENT TO SOCIAL RESPONSIBILITY

Environmental sustainability is one of the most important and urgent issues facing our society. The University is focused on specific, practical and measurable actions which will have a real and lasting impact on the environment.

CREATING A SUSTAINABLE FUTURE

We are committed to an ambitious target to reduce Scope 1 & 2 carbon emissions to net-zero by 2040 and reduce Scope 3 emissions to net-zero by 2050.

BUILDING MODERN SUSTAINABLE BUILDINGS

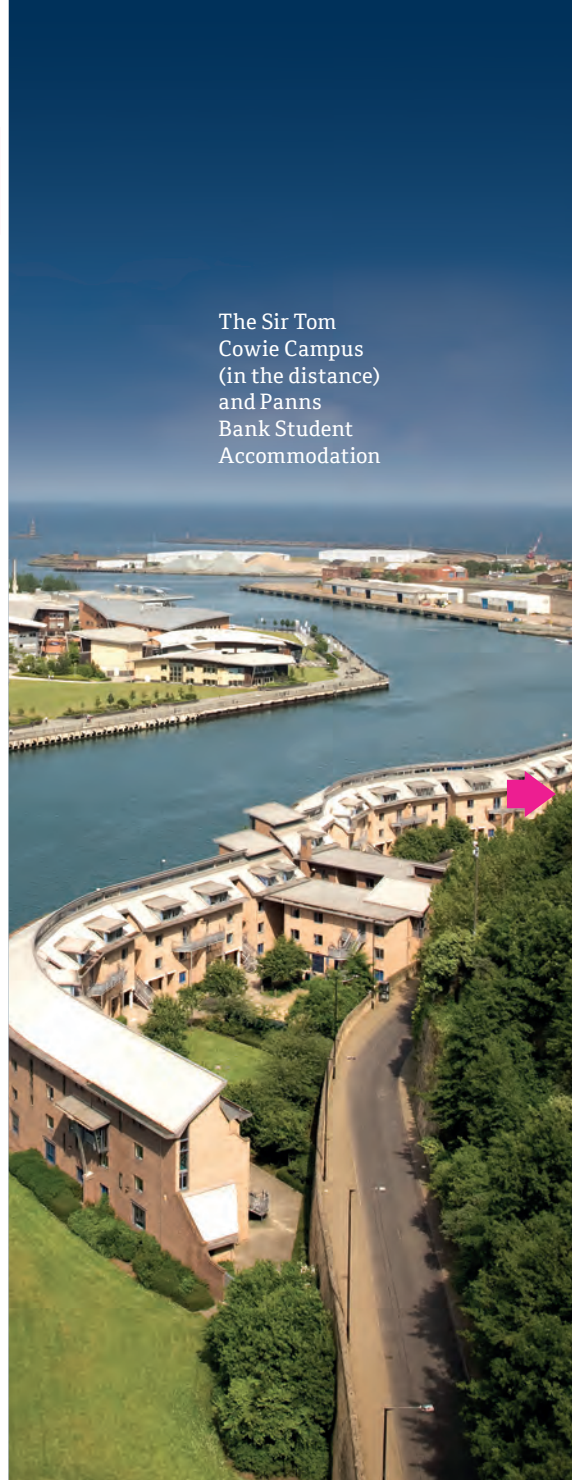
Our new Anatomy Centre on City Campus incorporates renewable electricity generation and 100% of the heat demand will be met by decarbonised technologies.

REDUCING THE USE OF CARBON-DEPENDENT UTILITIES

Recently, we have installed solar panels on many university buildings including Prospect, Edinburgh, CitySpace and Gateway buildings, which are expected to generate a mass of free, renewable electricity each year. We also have another large solar project underway at our Sir Tom Cowie Campus.

Our new Anatomy Centre incorporates renewable heat and solar electricity generation in its design.

The Sir Tom Cowie Campus (in the distance) and Panns Bank Student Accommodation



MAKING OUR CAMPUS GREENER

A greener campus not only helps the environment, but also the mental wellbeing of you and our staff. We have two new gardens for everyone to enjoy on our City Campus; planting wildflowers will help to develop the area's biodiversity, as well as working with our Students' Union on a tree planting project.

SUSTAINABLE TRAVEL

Through a range of projects – such as further investing in internal electric vehicles and encouragement of cycling, walking and car sharing – you will have a range of low carbon, healthy and sustainable travel options.



Zero Emissions - one of our fleet of new corporate electric vehicles on campus



www.carbonbalancedprint.com
CBP2105

This prospectus has been Carbon Balanced by Potts Print (UK) and World Land Trust. The University of Sunderland is proud to contract with suppliers taking steps to address the climate emergency.



KIRSTEN MCGILLIVRAY

BSc (Hons) Criminology

Residential Worker, Durham County Council

Kirsten found her passion for criminology during high school. After realising her course at a different university wasn't meeting her needs, she decided to move closer to home and join our BSc (Hons) in Criminology.

Kirsten said: “ It was such a positive experience and my advice to anyone thinking of coming to study here would be to make the most of it, as the three years go by much faster than you'd expect! ”

After graduating, Kirsten has put her passion into practice, using skills from her degree to make a positive impact.

“ Once I graduated, I was lucky enough to get the job I'd always wanted – I now work at a secure unit for children for Durham County Council and I love every second of it. ”

**THINK COURSE
THINK CAREER
THINK SUNDERLAND**



THIS IS SUNDERLAND

The city by the sea. The place where lives are changed, futures are shaped, and stories are written. For you, Sunderland is the place where lifelong friendships are forged, and unforgettable moments are made. Many of our graduates love it so much, they end up calling it home.

Virtual tour of some
of Sunderland's
attractions



From big events to unique attractions like the National Glass Centre and Northern Gallery for Contemporary Art, there's always something to do in Sunderland.

Highlights have included:

- The Sunderland Illuminations, which light up the autumn evenings every year
- Sunnyside Live, the summer-long festival of music and dance which brings in visitors from across the country
- The annual Kubix Festival (who we partner with) and Let's Rock The North East Festival in Herrington Country Park which has amazing band line-ups
- A string of vibrant independent bars, pubs, restaurants, and coffee shops hosting regular live music nights, reading and writing groups, craft clubs and more

Furthermore, an exciting partnership named Sunderland Culture has been established between Sunderland City Council, University of Sunderland and Sunderland Music, Arts and Culture Trust.

The Cultural Spring which is University-led brings artists and performers together to work with communities across Sunderland and South Tyneside. It also offers volunteering and work experience opportunities.



**SUNDERLAND
CULTURE**

The partnership presents a year-round programme of exhibitions, events and performances across National Glass Centre, Northern Gallery for Contemporary Art, Sunderland Museum and Winter Gardens, The Fire Station and Arts Centre Washington.



Sunderland's
Northern Spire
Bridge



GET A CITY BY THE SEA

Sunderland's Roker and Seaburn beaches have received Blue Flag status for the eighth year running. They attract walkers, surfers, runners and cyclists wanting to enjoy the fresh sea air, while the marina complex provides top-class facilities all year round.

Sunderland is incredibly fortunate to sit on some of the most beautiful stretches of coast in the north-east.

Just a few miles south, you'll find the pretty harbour town of Seaham, with spectacular views from the clifftops to the harbour and sandy beaches below.

Did you know?

50% of Sunderland's city centre is actually green space*

*mysunderland.co.uk

Take a stroll down the 609m long Roker Pier to visit the restored lighthouse and underground pier tunnel





Sunderland's beaches at Roker and Seaburn were awarded Blue Flag status for cleanliness, water quality and constantly improving visitor facilities in 2023 by Keep Britain Tidy.

ROW, SURF AND SAIL AWAY

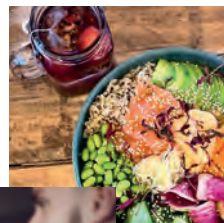
Sunderland doesn't just have great beaches – it has great surf spots too. The weather might not be tropical, but the waves are up there with some of the best.

Discover Adventure Sunderland, a welcoming marine activity centre on Roker Beach. If you prefer dry land, climbing, archery, fencing and abseiling are also on offer at this venue.

FEELING BRAVE? DIVE IN

Whether you're a beginner or a novice, we have plenty of different watersports clubs for you to join and try out, run by our students via Team Sunderland (page 48). You could try surfing, windsurfing, sailing, scuba diving and climbing.

Take a moment
Visit our independent
seaside cafés and
bars



SOCIAL BY THE SEA

The beautiful coastal hotspots of Roker, Seaburn and Seaham have seen recent exciting developments making them incredibly attractive to locals and visitors alike. A host of independent cafés and restaurants pepper the promenade of Seaburn and Seaham, and Roker's Pier Point, forming part of an increasingly vibrant destination that is only set to be enhanced, with more new venues opening soon.



DID YOU KNOW?

Sandhaven beach in nearby south shields has been named Sunday Times beach of the year 2022.



GET A CITY

FULL OF LIFE

SEVEN THINGS TO DO FOR UNDER £10 OR FREE IN SUNDERLAND

1. Beach Day! Roker and Seaburn beaches are not far from the city centre and are a fun day out in all seasons. Both beaches have been recognised as a Blue Flag Beach.
2. Sunderland Museum & Winter Gardens. Explore four floors of fascinating exhibitions at the beautiful Victorian museum and gardens. Admission is free and it's a great thing to do on a rainy day.
3. Herrington Country Park. An idyllic green space on the outskirts of the city, offering walking and cycling trails.
4. Taste one of Sunderland's local delicacies, a pink slice, or a savoley dip! Available at most bakeries and chip shops in the city.
5. Visit Penshaw Monument and take in the panoramic views across Sunderland and beyond. The monument was built as a memorial to the Earl of Durham back in 1844, and is modelled on the style of the ancient Greek temple - the Parthenon.
6. For a peaceful stroll, Sunderland Marina is perfect. Filled with yachts and fishing boats, it's often quieter than the adjacent beach and reflects the history of shipbuilding and a busy port of Sunderland.
7. Step back in time on a guided tour of Hylton Castle, which has stood in this spot since 1400! Tickets are just £5.

Watch our 'Make Your Moment' video



Whether you're looking for retail therapy, entertainment, independent coffee shops, festivals, green spaces, cosy pubs or vibrant nightlife, Sunderland's busy city centre offers plenty of places to spend time with friends.

GET A BUZZING MUSIC SCENE

Sunderland has an internationally renowned independent music scene with a whole host of live music venues, alongside a number of sunshine-filled summer festivals, with sets from Jack Savoretti, The Shires, Billy Ocean, and local band The Futureheads. The Stadium of Light Football Club is now a regular venue on stadium tours and has previously played host to the likes of Oasis, Kings of Leon, Rihanna, Bruce Springsteen, Beyoncé, Coldplay, Kasabian, and Ed Sheeran.

GET CLOSE TO THE GREAT OUTDOORS

If it's nature that you love, then we have beautiful outdoor spaces like Mowbray Park and Herrington Country Park, nature reserves such as Rainton Meadows, cliffs and hilltops, and miles of coastline to keep you active. The whole area is rich in wildlife, and you can discover endless walking routes, whether taking in green landscapes, fresh sea air or the city's heritage.

GET EXCITING ENTERTAINMENT

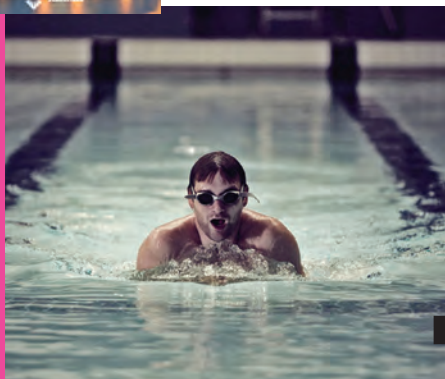
Standing proud in the city centre, the iconic Empire Theatre is the biggest theatre in the north-east and presents everything from West End shows to stand-up comedy, as well as offering student discounts. Slow the pace at Sunderland Museum, Library and Winter Gardens, which opened back in 1810 and contains works from L.S. Lowry and collections dating back to 1846.

GET INTO SOME RETAIL THERAPY

Sunderland is known for its independent retailers such as clothing shops Aphrodite clothing, Bou-Chique and Corner 93. Whether you love a bargain or enjoy high-end fashion, you'll find it all in Sunderland. The Bridges indoor shopping centre is right in the heart of the city, so a bit of retail therapy is never far away.



Did you know? Sunderland's Aquatic centre contains the only olympic size swimming pool between Leeds and Edinburgh.



GETTING ACTIVE

Whether you like to swim, ski, run, cycle, climb, sail, surf, train indoors or outdoors, you can take part in it all at Sunderland. We have an excellent gym and sports provision on campus and you can get involved with a Team Sunderland club (see page 48). Around the city are a whole host of exciting venues – whether you are looking to take part or simply watch – including Sunderland AFC, Silksworth Ski Slope and Adventure Sunderland.

TICKLE YOUR TASTEBUDS

Our array of pubs, bars, restaurants, and clubs ensure that no two nights are ever alike. From quirky cocktail bars to hand-pulled real ales and trendy nightclubs, we really do have something to suit all budgets. Indulge your taste buds with a wide variety of cuisine. Whether it's breakfast, brunch or a fancy evening meal, you'll find it in Sunderland.

GET A TASTE OF THE NORTH-EAST

Sunderland is an ideal base from which to explore the north-east region and access some of the UK's best natural, heritage and cultural attractions. Within 30 minutes you can visit historic Durham and its magnificent cathedral, castle, and riverside views. Neighbouring Newcastle's vibrant city offer of eateries, nightlife and retail. It also includes the cultural delights of BALTIC Centre for Contemporary Art and just across the river, Sage Gateshead.

Discover places
to visit in the region



Durham Cathedral

To find out more about the
north-east region visit
visitnortheastengland.com



Angel of the North
©NewcastleGateshead Initiative



Sage Gateshead

FANCY A BIT OF SHOPPING?

For retail and entertainment experiences, try one of the UK's biggest shopping centres, Gateshead's Metrocentre. For both high-end and high street shops, head to Eldon Square in Newcastle, or south down the A19 to Dalton Park – Outlet – Shopping Centre. If you're into your vintage shops or arts and crafts, then you'll find plenty of outlets like the Quayside Market or Newcastle's Biscuit Factory to discover.

STEEPED IN HISTORY

There's a world of history to uncover in the north-east – you can immerse yourself in the past, as the beautiful coastline continues into the more rugged Northumberland with stunning coastal castles to explore. We have some of the best-known castles in the UK – try the imposing Bamburgh Castle or the spectacular ruins of Dunstanburgh. Scenes from the Harry Potter films were shot at Alnwick Castle and Alnwick Garden, where you can easily spend the day.

Further afield in the north of our region, visit the windswept Holy Island of Lindisfarne, cut off at high tide, or the bustling town of Whitby in the south, known for its outstanding fish and chips and its association with Dracula.



Holy Island



Bamburgh Castle

Sunderland's Washington Old Hall was home to the ancestral family of George Washington, first President of the USA. The red and white colours of the family crest feature in the American flag and influenced the Sunderland A.F.C. football strip.

GET A CITY OF AMBITION



Watch our virtual city tour



Sunderland is a place that's as proud of its past as it is excited about its future. Nestled on the stunning north-east coastline, the city traces its roots back to Anglo Saxon times – and is currently seeing transformation on an unprecedented scale.

Hundreds of millions of pounds are being ploughed into exciting projects across Sunderland, that are creating world-class places to live, work and play. The result is a confident young city with a spring in its step.

SMART CITY OF THE YEAR

Sunderland was named Smart City Of The Year 2020 and the City Plan will provide social and digital transformation, steering a new way for everyone to live, work and thrive; our connected international city is ripe with opportunities for all.

At the heart of the transformation is Riverside Sunderland, a new district on the edge of the city centre, with its toes dipped in the nearby River Wear. The development will evolve both sides of the river, creating the UK's first carbon

neutral urban quarter, where there will be a range of high-quality modern office spaces, cafés and eateries, a hotel and other leisure venues, and 1,000 ultra-sustainable homes, where some 2,500 people will eventually live. Visit riversidesunderland.com

One million square feet of modern offices and commercial premises are being created as exciting new sites for businesses to grow. The Beam is the first office space on site – home to global grocery giant Ocado, as well as ambitious north-east firms, Asset55 and North East Screens. Standing to its east is City Hall, which has opened its doors to some 2,000+ employees. In addition, planning consent has already been granted for two further office spaces that will be developed, thanks to a £100m boost from Legal & General.

Riverside
Sunderland
Artist's
Impression



The Beam



CULTURAL INVESTMENT

A stone's throw away from the University, Sunderland's Cultural Quarter is taking shape.

The 500-seat Fire Station Auditorium, which is part of a multi-purpose building housing a restaurant, heritage centre and a dance and drama studio, has a packed programme and welcomes hundreds of visitors.

The Auditorium is Sunderland's talked-about performance venue, hosting live music, comedy, arts, and theatre events. It is used by the local community, and our Performing Arts students, who work alongside dance and music industry students in the same space.

Excitingly, Fulwell 73, a media production company and the mastermind behind 'Sunderland 'Til I Die', have opened new offices on our campus. This will open up opportunities to collaborate with new talent in the region. In addition, plans to build an international film studio complex on the riverside in Sunderland have been recently announced with an ambition to create more than 10,000 jobs.

Recent developments on the sea front like Stack Seaburn – a social hub to relax and hang out

with friends – as well as the brand-new Seaburn Inn are also adding a new dimension to the area. It's little surprise that it's becoming a popular spot for people, who want to take in the stunning coast with local fish and chips or a coffee and sweet treats from our beautiful local bakeries and eateries.

The investment in public spaces is all contributing to an ever-more attractive place to live, study, work, and play.

Visit mysunderland.co.uk for up-to-date information on Sunderland's development.



STACK
in Seaburn

GET EXCITED ABOUT THE FUTURE

There are always investments being made and exciting improvements being built in our city – and they'll bring even more experiences to our student community. Whether it's a drink with a view after lectures or a city centre you're proud to show visiting friends, the upcoming developments have it covered.

Over the next few years, Sunderland will see huge changes to update and bring life to all areas of the city, from the city centre to the seafront. It's an exciting time to live, work and study here!

Here's a taste of some of the most recent developments that will add even more vibrancy to the place we – and you could – call home.





A NEW HUB FOR THE CITY

£27 million has been put into the building of a new attraction in the city, Culture House. It will host events, house a café, exhibitions, a roof garden and more for you and the wider community to enjoy.

AN EXCITING MUSIC AND EVENTS VENUE

Sunderland already has a bustling music scene, with the world's biggest artists touring here every year and a great local scene – and it's only getting bigger. A riverside stable block in a beautiful, listed building – Sheepfolds - is being transformed into a new venue for music, events, pop-up markets, bars, and restaurants.

BRAND NEW PLACES TO WORK, LIVE AND STAY

Multiple developments are taking place around the city, giving abandoned buildings a new lease of life to create hotels, offices and homes. From an old police station to an historic hotel and the site of a former brewery, the city is seeing drastic transformations, and we can't wait to see it come to life.

EAT, DRINK AND SOCIALISE

Our food and drink scene are among the best in the region – and it's not slowing down. In fact, Sunderland was named 'Best UK city for independent restaurants'* with neighbouring Newcastle and Middlesbrough in the Top 20 list too. A new seafront bar is in the works, being built in an empty Victorian beachfront shelter. An all-you-can-eat steak house is coming to the city centre and an old storage shelter in Seaburn is being transformed into a new seafood restaurant. So there's plenty of tasty plans in the works.

AN ENTRANCE TO BE PROUD OF

Sunderland railway station is undergoing a huge £16 million project, with ambitious transformations giving our city an entrance it deserves. With new ticket offices, cafés, waiting areas, retail spaces currently being built, these developments will be incredible when they're completed over the next few years.

* According to the Independent Restaurant Index 2023, compiled by business energy experts, Bionic.

GETTING

HERE

Set on the north-east coast, right where the River Wear joins the North Sea, Sunderland is connected to the rest of the UK by excellent road and rail links. You can also reach us by air and sea!

Once you arrive, getting around is easy with plenty of local buses and the Tyne and Wear Metro, as well as a good network of cycle routes and public footpaths.

RAIL

You can travel on a direct train from London Kings Cross to Sunderland in around three hours. Many of these trains also call at Hartlepool, Eaglescliffe, Darlington, Northallerton, Thirsk, York, and Peterborough, with most offering student discounts. There is also a frequent rail service from Newcastle, easily accessible via the Tyne and Wear Metro service.

LONDON NORTH EASTERN RAILWAY

LNER.CO.UK

NORTHERN RAIL

NORTHERNRAILWAY.CO.UK

GRAND CENTRAL

GRANDCENTRALRAIL.COM

LUMO TRAINS

LUMO.CO.UK

SEA

DFDS operate daily crossings from Ijmuiden in Holland. Travelling the 12 miles from the International Passenger Terminal at North Shields to Sunderland takes about 25 minutes by car or approximately an hour by public transport.

You can also visit Amsterdam with DFDS, and include an overnight stay in the capital. See the sights of the city from a different focal point by taking a cruise on Amsterdam's waterways or visit the many attractions the city has to offer, including its museums and galleries.

DFDS

DFDS.COM

AIR

Sunderland is accessible by major airlines through Newcastle International and Teesside International airports.

It takes less than an hour to travel direct to the University of Sunderland from Newcastle International Airport on the Tyne and Wear Metro service.

NEWCASTLE INTERNATIONAL AIRPORT

NEWCASTLEAIRPORT.COM

TEESSIDE INTERNATIONAL AIRPORT

TEESSIDEINTERNATIONAL.COM

CAR

The University of Sunderland is well connected to the rest of the UK via the A19 and A1(M). Our City Campus is just ten minutes from the A19 which runs from Doncaster up to Northumberland and is just 20 minutes from the A1(M), which links Edinburgh to London down the east coast.

COACH

Park Lane Interchange is about a ten-minute walk from City Campus and is the city centre's main bus station, where local buses and national coaches pick up and drop off.

NATIONAL EXPRESS

NATIONALEXPRESS.COM

BUS

Sunderland has excellent bus networks serving Sunderland and the surrounding area including Newcastle and Durham. The Sunderland Connect (700) bus is free for University of Sunderland students with a

GETTING AROUND

Wherever you're coming from and however you get here, you'll receive a warm welcome to Sunderland.

valid student ID and connects City and The Sir Tom Cowie Campuses with halls of residence.

- NEXUS.ORG.UK
- GONORTHEAST.CO.UK
- STAGECOACHBUS.COM
- ARRIVABUS.CO.UK

METRO

The Tyne and Wear Metro light-rail service is an easy means of getting around Sunderland, with trains running to and from Sunderland approximately every 12 minutes. There are direct links to Newcastle Central Station (30 minutes) and Newcastle International Airport (59 minutes).

For timetables and information on the Tyne and Wear Metro and all local bus services please visit:

- NEXUS.ORG.UK/BUS
- NEXUS.ORG.UK/METRO

PARKING

There is plenty of reasonably priced and even free parking in the city, making it easy to access attractions, events, green spaces, cafés, restaurants and entertainment spots.

STAYING OVER

If you are planning a visit for an open day, then Sunderland has a wide variety of hotels, both in the city centre or overlooking the coast. We even have a Premier Inn right on campus.



TRAVEL TIMES

| FROM | TO SUNDERLAND |
|---------------|-------------------------|
| NEWCASTLE | 🚗 30min 🚏 22min |
| MIDDLESBROUGH | 🚗 41min 🚏 58min |
| EDINBURGH | 🚗 2hr 41min 🚏 2hr 16min |
| MANCHESTER | 🚗 2hr 40min 🚏 2hr 50min |
| LONDON | 🚗 5hr 6min 🚏 3hr 38min |

GET A HOME FROM HOME

Living with other students is a brilliant way to immerse yourself in the university experience. It could well be the place you meet friends for life.

Benefits include:

- Fully equipped kitchens (crockery and cutlery not included)
- Cashless laundry facility
- Free onsite parking for residents
- Choice of three accommodation sites, including optional ensuite rooms and riverside views
- Family and couples accommodation options
- Fast, reliable internet
- All-inclusive rent
- Year-round accommodation
- Personal possessions insurance
- Wheelchair access
- Disability support
- Dedicated Accommodation team at each hall, available 24/7
- No deposit required and we do not require a guarantor
- Secure/gated card entry access to each hall
- Well maintained outside space

sunderland.ac.uk/student-experience/accommodation

Watch our virtual accommodation video



Visit sunderland.ac.uk/student-experience/accommodation and a link to our terms and conditions can be found at the bottom of the page.

GET IN TOUCH

...by email or phone for help and advice
accommodation@sunderland.ac.uk
 +44 (0)191 515 2943



“ I would recommend anyone studying at Sunderland to live in university accommodation! I’ve made some amazing friends here and have loved the feeling of living in a community.

I received great support from Accommodation Services, which made moving away from home a lot easier. Metro and bus stops are close by so it’s really easy to get to and from University and into the town centre. ”

LAURA KAYE
BSc (Hons) Psychology



UNIVERSITY ACCOMMODATION IS VERY COMPETITIVELY PRICED.

Go to sunderland.ac.uk/about/accommodation to view our accommodation prices.

GET READY TO GET INVOLVED

**Your
SU**nderland*

*Students' Union

HELLO FROM YOUR STUDENTS' UNION!

One of the best things about being a student is finding a place you belong – and Your Students' Union (SU) is at the heart of this experience.

We're here to empower you and help you play an active role in university life. By giving you the support you need as you make friends, have new experiences and graduate with the best degree you can! We're led by students, for students and there's always something new to get involved in.

You're automatically enrolled as a member, for free, as soon as you register on your course.

GET INVOLVED

Make sure you make the most of Your SU. You can be part of all of this and more:

- Get involved in events and activities
- Join or start a society and share your passion
- Represent students on your course
- Access free, independent, confidential advice and support
- Share your views
- Team up with a SU Buddy or become a buddy yourself
- Lead on campaigns that make a real change to students' lives
- Volunteer on campus and in the wider local community
- Become a Student Leader
- Gain valuable career skills and experience

Go to sunderlandsu.co.uk

For our latest events go to sunderlandsu.co.uk/events

Connect with us [@sunderlandsu](https://twitter.com/sunderlandsu)



Virtual tour of places
to eat and drink on
campus





JOIN A SOCIETY

Societies are a great way to meet like-minded students, make friends and find your community at university; while having a fantastic time and maybe trying something new.

We have over 50 student-led societies, covering everything from games, music and films to faith and cultural groups, and academic subjects.

Find out more at:
sunderlandsu.co.uk/groups



Take a virtual tour
of our clubs and
societies



GET ACTIVE

SPORT IS A WAY OF LIFE IN SUNDERLAND

Whether you're a serious competitor or just love taking part, you'll find so many opportunities to watch, play, coach and study sport. Try something you already know or take up something completely different – whatever the sport, it will be a great way to make new friends.

OVER 30 SPORTS CLUBS AND ACTIVITIES TO BE INVOLVED IN

Team Sunderland is home to over 30 sports clubs. Joining a Team Sunderland club will help you meet new friends, experience new cultures, express your creativity and have fun. You'll also develop skills that will be essential in your working life. There are so many opportunities to get involved – from netball to basketball, through to hockey to scuba diving, there's something for everyone. And if we don't offer a club with your interests, we'll help you set one up.



- We run a range of programmes in a variety of areas, from strength training and group classes to fitness camps, courses, clubs, teams and even volunteering schemes. So whether you're interested in playing, organising or just watching, there's something for you.
- Discover all sorts of fun opportunities through UoS Active, our casual 'Pay & Play' scheme.
- Make the most of CitySpace, our flagship facility which includes a state-of-the-art fitness suite, functional training spaces, sports massage clinic, six-court badminton hall and more.
- Enjoy our open-air, multi-use, full-sized floodlit court at The Sir Tom Cowie Campus.
- Try something new or develop your skills with coached taster



THINK COURSE
THINK CAREER
THINK SUNDERLAND



SIMON UZOKWE
MPharm Pharmacy graduate

Professional Rugby Player,
Ealing Trailfinders Rugby Club

“ After attending an open day, I was impressed with the modern look of City Campus and because of the Pharmacy department’s reputation, it was an easy decision for me to study here. ”

Juggling study alongside playing professional rugby has been challenging and I’m not too sure this would have been as smooth and achievable at another university.

During my time here, both the city and the University have changed massively; it’s even better now than when I first arrived.

If I can give any advice it would be to make sure you attend an open day so you can get a feel for the university and the area. ”

Get More:

“Being accepted onto Pharmacy, followed by being offered my first professional contract.”

courses, full training and competition packages, and over 20 sports teams to join, all covered by our house sports media platform SportsByte.

- Are you an Elite Athlete? We offer funding of up to £1,000 for talented individuals who will be given the opportunity to represent Sunderland at regional and national level sports.
- Interested in a career in sports? Add skills to your CV and find placement opportunities and sports career guidance through the Sport Career Academy.
- The city of Sunderland has some outstanding facilities, including a 50m swimming pool, 110m dry ski slope, LTA accredited tennis centre, athletics track, marina and water sports centre.

PREFER TO WATCH?

You’ll be spoilt for choice. There’s football (soccer) in Sunderland, Middlesbrough and Newcastle, cricket at Durham County Cricket Club, basketball with Newcastle Eagles, and rugby union with Newcastle Falcons.

FIND OUT MORE ONLINE

See the full list of clubs at teamsunderland.com

Email: team@sunderland.ac.uk

Call +44 (0)191 515 3696

SUPPORTING YOUR INTERNATIONAL EXPERIENCE

Watch our Disability Support Services video



When you're a long way from home, it's important that there's always someone you can talk to – whether you need practical, emotional or financial guidance. So whatever you need, all you have to do is ask. From the moment you apply to the day you graduate, we'll be there to help you.

GATEWAY ENQUIRIES

This is the place to go for advice and support. Some of the friendliest people you'll ever meet will deal with your query directly, or they'll put you in touch with others who can.

You can access the International Student Support (ISS) service via the Gateway Enquiries team.

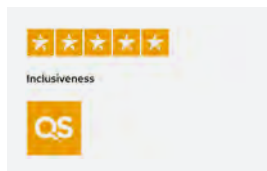
They can help you with:

- Extending your Student visa and assigning your Confirmation of Acceptance for Study (CAS)
- Administrative review support for visa refusals
- Guidance on applying for your Graduate visa
- Visa workshops for Pre-Sessional English for Academic Purposes (EAP) students
- Induction presentations to students during enrolment weeks

FINANCIAL GUIDANCE

If you're new to the UK, it helps to get some guidance on making your money go further. Our Student Financial Guidance team can help answer your questions about the cost of living in the UK, scholarships, budgeting and general money management.

Go to sj.sunderland.ac.uk/studentfinancialguidance
 Email: studentfinancialguidance@sunderland.ac.uk
 Call +44 (0)191 515 2933



The QS Stars rating system is an international standard identifying excellence and diversity among the world's Universities. Visit qs.com for more information.

We wish you a warm welcome to the University of Sunderland. You are now part of the team and the wider community. Find out more by visiting sj.sunderland.ac.uk/belong/

Every Tuesday at 7pm during term time, we organise a Global Friendship evening. It's a great way to make friends and chat to people from different cultures. Please contact us for further information.

INTERFAITH CHAPLAINCY

The Chaplaincy offers information on the many different places of worship in the area and encourages and supports students and religious groups of all faiths and non-denominations.

The University's full-time Chaplain coordinates a multi-faith team and runs activities for all who wish to explore or affirm their faith and those who wish to find out more.

Email: chris.howson@sunderland.ac.uk

WELLBEING

There's no problem too big or too small for the Student Wellbeing team. We offer a free and confidential service, giving you support to help you manage any difficulties whilst studying with us.

- General wellbeing advice and support
- Therapeutic Counselling and Cognitive Behavioural Therapy (CBT)
- Mental health support
- Group work, workshops and welfare support
- Links to external specialist support services
- Referrals and signposting
- Online reporting and support to ensure student safety
- Free overnight wellbeing support, seven days a week, 6:30pm - 6:30am. Call +44 (0)191 515 2451
- UMII - free online platform for you to start connecting with other students

You have free 24/7 access to our online self-help and community platform. Support is also available face to face, via Microsoft Teams, email or telephone. We offer evening appointments too, whatever best suits you. To find out more visit

Go to sj.sunderland.ac.uk/wellbeing/online-support/umii

sj.sunderland.ac.uk/wellbeing

sj.sunderland.ac.uk/wellbeing/silvercloud

Email: wellbeing@sunderland.ac.uk

DISABILITY AND LEARNING DIFFERENCES

If you have a disability (including mental health and/or long-standing health conditions), the Disability Support team will work with you to ensure that you have the learning support you need.

The team are experienced, friendly disability professionals and always look forward to engaging with new students. Appointments can be made via the contact details below and we will always try to use your preferred method of contact for any meetings that are arranged (email, telephone, Skype, Teams). The discussion will include how we can, with your agreement, inform your tutors of any challenges you may face and list the support you require.

Early contact from applicants is welcomed and encouraged.

If you are unsure whether you may be eligible for support from the team, we would still recommend getting in contact for an informal discussion.

Go to sj.sunderland.ac.uk/disability/about

Email: disability.support@sunderland.ac.uk

Call +44 (0)191 515 2952

Instagram: [@disabilitysupportteam](https://www.instagram.com/disabilitysupportteam)

ASSESSMENT CENTRE CONTACT DETAILS

Email: assessmentcentre@sunderland.ac.uk

Call +44 (0)191 515 2249

Text/WhatsApp: +44 (0)786 606 3402

EQUALITY, DIVERSITY AND INCLUSION AT THE UNIVERSITY

We value and celebrate the diversity of all our students and staff. We are committed to providing an environment free from discrimination, bullying, harassment, or victimisation, where all members of our community are treated with respect and dignity.

We aim to create a culture of diversity and inclusion within our community, providing a dynamic working and learning environment, where all members are valued for their contribution and individuality.

We recognise that to be truly effective, equality, diversity and inclusivity should be considered across all facets of the University's activity. Mainstreaming starts with effective policies and procedures and goes beyond this to the culture of our University. We aim to move equality, diversity, and inclusion away from being seen as a 'bolt-on' activity to being an integral part of the way our students and staff think and behave.



GET TO STUDY ABROAD

Looking to enhance your university experience with travel? We can help you if you are:

- An international 'Study Abroad' student planning to come to Sunderland from your home university for one or two semesters
- An international student doing your main degree in Sunderland, who is considering going outside the UK to a partner university for a semester or two during your degree

The internationally recognised Study Abroad programme is playing an increasingly important part in students' university courses across the globe, and many of those who choose a period of studying abroad come to the UK.

You can gain so much from living in another country and, at Sunderland, we do all we can to ensure that you receive a first-class education. We also give you extensive experience of international, national, and local culture, which further enriches your social, cultural and academic experiences.

Countries include Australia, Canada, USA, Malaysia, South Korea and a number of European countries.

INTERESTED? CONTACT THE STUDY ABROAD TEAM.

Go to sunderland.ac.uk/study/study-abroad

Email: study.abroad@sunderland.ac.uk

**THINK COURSE
THINK CAREER
THINK SUNDERLAND**

MIRANDA SCHWANKE
FROM THE USA SPENT TIME
AT SUNDERLAND DURING
HER DEGREE AS A 'STUDY
ABROAD' STUDENT

“ I always knew I wanted to go to another country. I come from Watertown, South Dakota, a fairly small town in a small state. I felt like experiencing another culture and being on my own so far away from home was something I needed to do to grow and really put myself to the test.

At my home university, I studied Studio Arts with an emphasis in animation. However, I wanted one solid year where I could focus on just animation, which led me to Sunderland.

Studying in another country was truly amazing. Everything here is so different, but in the end the people are the same all over the world.

You should take part in Study Abroad, even if it scares you a little, because it's that slight fear that will change your life and make your adventure that much more exciting. I can't tell you what exactly you will experience, that part is up to you, but I can say no matter where you go or how long you stay there, experiencing that culture is worth it. ”



GET NETWORKING

With such a large international student network, you can be sure that your Sunderland experience will help open doors for you in countries around the world. Our graduates have fond memories of their time with us and are keen to support others who've enjoyed being a Sunderland student.

After graduation you become part of the University's Alumni Association, which provides a global network of over 200,000 former students in 190 countries.

You will be able to access alumni branches in places such as: Hong Kong, Malaysia, Nigeria, China, Singapore, Greece and Kenya, among many others. These run a number of in-country events with the University providing you with an opportunity to extend your professional network.

GIVING SOMETHING BACK

Many of our alumni also continue to support the University by acting as ambassadors, giving careers advice to students and supporting bursaries and scholarships through the Futures Fund.

Our online community enables you to stay involved no matter where you are in the world. You will benefit from careers advice, mentoring, professional development and access to the University's academic expertise.

By staying involved you can also keep in touch with friends and your department. Our alumni go on to great things, and so will you!

ONCE A SUNDERLAND STUDENT, ALWAYS A SUNDERLAND STUDENT.

Go to sunderland.ac.uk/alumni

OUR ACADEMIC REPUTATION TRAVELS FAR AND WIDE

One thing is for sure, if you study at the University of Sunderland, your qualifications will be respected worldwide. We're renowned for teaching overseas students and you'll find our alumni in leading businesses, governments, and academic institutions all over the world. Our academic pedigree stretches back to 1901 and we now have over 200,000 alumni around the globe.

For over 100 years, academics have challenged themselves and each other to use research to discover, to understand and to make an impact on society. It is embedded into our courses, giving students the opportunity to apply research to their own learning and practice.

Our research spans many subject areas from digital technology to material science, health and wellbeing to media and culture. It is recognised as having an impact at a national and international level.

What makes our research stand out is its relevance to the real-world, and the way it informs all areas of our teaching. Our academics are at the leading edge of their subject areas, ensuring they deliver a great experience for you, and ground-breaking outcomes for our community and the wider world.

In the latest Research Excellence Framework results, over 70% of published research carried out at the University of Sunderland has been rated as either world-leading or internationally excellent.

WORLD-LEADING

Sunderland is recognised internationally as a leading university, receiving five stars for teaching, inclusiveness, employability, and facilities in the QS World University Rankings 2023.

OUR CONTRIBUTION TO SOCIETY

Data released in 2022 from Research England's Knowledge Exchange Framework revealed the critical and multi-million-pound impact the University has on the region, including being:

- in the top 20% of universities nationally for local growth and regeneration
- in the top 20% of universities nationally for research partnerships
- in the top 20% of universities nationally for Innovate UK income
- in the top 40% of universities nationally for graduate start ups

PROVEN EXCELLENCE IN TEACHING

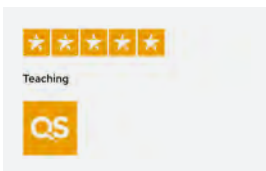
We were also awarded the Quality Mark by the Quality Assurance Agency (QAA), which is only given to higher education providers who have met or exceeded the UK expectations for quality and standards in higher education.





FROM RESEARCHERS TO TEACHERS

You will be taught by highly qualified and talented staff who are active in their specialist field. Our staff have academic and professional credibility both nationally and internationally and all strive for the success of their students. As a graduate you will leave equipped with the knowledge, skills, confidence, and connections to move into your chosen career. In the National Students Survey 2022, a range of programmes including Social Work, Events Management, Community and Youth Work Studies and Forensic Psychology achieved the top rating of 100% satisfaction.



The QS Stars rating system is an international standard identifying excellence and diversity among the world's Universities. Visit qs.com for more information.

GET TAUGHT BY EXPERTS

We have five faculties covering a huge and diverse range of subjects, from business studies, computing, and engineering to nursing and pharmacy.

Our academic expertise in a range of subjects is highlighted by results from the Guardian

University Guide 2023 including:

- 1st in the UK for our Film Production and Photography courses
- 12th in the UK for our Education courses
- 13th in the UK for our Hospitality Management Events Management and Tourism courses
- 1st in the north-east for Teaching Quality

The University of Sunderland is also 1st in the north-east for Teaching Quality and Student Experience (The Times and Sunday Times Good University Guide 2023).

Whatever your subject area, you're sure to find fantastic facilities, world-class research and deep academic expertise.

Professor Lawrence Bellamy



PROFESSOR LAWRENCE BELLAMY
ACADEMIC DEAN, FACULTY OF
BUSINESS, LAW AND TOURISM
HARNESSING STRATEGIC INNOVATION FOR A
GLOBAL FUTURE

Professor Bellamy's research interests include Strategy, Enterprise, Small Business, Supply Chains, International Management and work-based learning. He has held positions as a Company Director, University Governor and regularly contributes as an expert on issues in the media. Professor Bellamy has served the Chartered Institute of Procurement and Supply (CIPS) as an examiner and has taught and been involved with partnership development in countries including Malaysia, Hong Kong, China, Norway, Singapore, Finland, Brunei and various parts of Europe. He has continued to support business throughout his academic career, working alongside industry, as Chair for a North West networking organisation and supporting the launch of a University Technical College.

DR MATTHEW CAMPBELL
PRINCIPAL INVESTIGATOR IN BIOSCIENCES AND
METABOLIC MEDICINE – SCHOOL OF MEDICINE
CHANGING POLICY WITHIN THE NHS

Dr Matthew Campbell's research into diabetes management and treatment attracted international acclaim. His research, funded by Diabetes Research UK, showed that frequent, bite-sized bouts of activity led to improvements in blood sugar levels, potentially reducing the risk of life-altering diabetes-related complications such as heart attack and stroke. His broader research into diabetes has changed international health policy and informed NHS and World Health Organisation guidelines and health recommendations.

Dr Campbell is one of the Vice-Chancellor's Research and Knowledge Exchange Fellows, one of 14 academics who are working on research projects to support the wider research and knowledge exchange environment in the university. He is also a Vice-Chancellor's Research Culture Fellow responsible for improving the research environment of the University.

Dr Campbell teaches across undergraduate and postgraduate Biosciences and Health Sciences courses, embedding his cutting-edge research into his teaching.

GET TO
MEET SOME
OF OUR
LEADING
ACADEMICS

Scan to meet our academics:



PROFESSOR KEVIN PETRIE
HEAD OF THE SCHOOL OF ART AND DESIGN
DELIVERING INNOVATIVE THINKING ABOUT
SOME OF THE WORLD'S MOST USEFUL MATERIALS

Professor Petrie was recognised for his contribution to glass and ceramics teaching and especially postgraduate support with a National Teaching Fellowship from the Higher Education Academy. He is a very experienced PhD supervisor and has worked with research students from the UK, Japan, Korea, USA, and China. He has also examined PhDs in Denmark, Australia, UK, and Sweden. As Professor of Glass and Ceramics, his particular interest is 'blending' printmaking and glass and ceramics for creative use and critical writing in glass and ceramics. He has published two books on this subject - 'Glass and Print' and 'Ceramic Transfer Printing'. He has also brought together critical writing on glass and ceramics through co-editing 'The Ceramics Reader' published by Bloomsbury and is currently working on 'The Glass Reader.'

DR PANAGIOTIS KARAGIANNIDIS
ASSOCIATE PROFESSOR IN ADVANCED
MATERIALS, SCHOOL OF ENGINEERING
CREATING INNOVATIVE SOLUTIONS WITH
ADVANCED MATERIALS

Dr Panagiotis' interests include the development of advanced composite materials and printed electronics. He has over ten years' experience of working and managing research projects, has published over 45 peer-reviewed research papers, patents and patent applications and has presented his research in over 60 conferences. He has an extensive track-record of collaborations with industry and world-class institutions.

Panagiotis teaches across undergraduate and postgraduate courses, embedding his research into his teaching. His teaching includes manufacturing and materials, sustainable engineering, thermofluids and engines, and automotive dynamics.

PROFESSOR LYNNE MCKENNA
ACADEMIC DEAN, FACULTY OF EDUCATION AND SOCIETY
SHAPING THE FUTURE OF TEACHER TRAINING

As recognised in the 2023 King's honour list for her services to education, and awarded an MBE, Professor McKenna is responsible for the strategic development and direction of the School of Education and the School of Social Sciences. Her expertise spans areas such as initial and post-qualifying teacher training and social sciences programmes. As Principal Fellow of the Higher Education Academy, Professor McKenna actively supports school-led provisions and advocates for the elevation of the teaching profession's status. Her involvement in the development of International Qualified Teacher Status (iQTS) and as a leader in innovation, and member of the DfE Expert Working Group further demonstrate her influence and dedication to the field of education.



Professor Lynne McKenna

GET THE SUPPORT NEEDED TO IMPROVE YOUR ENGLISH SKILLS

Concerned your English won't be good enough for academic study? No problem, our online courses help you develop your spoken and written language skills.

IMPROVE YOUR ENGLISH BEFORE YOUR STUDIES BEGIN

Pre-University or Preparatory Courses

If you do not have the necessary English qualifications or would like to build on the qualifications you do have, then you can study.

ENGLISH FOR ACADEMIC PURPOSES PRE-SESSIONAL COURSES

This scheme of short intensive courses provides you with the language skills needed to succeed in higher education in the UK.

Classes focus on the development of skills to use English for study and research purposes: note taking, study techniques, seminar skills, writing essays and reports, planning research projects, making presentations, individual study and group work.

English for Academic Purposes (EAP) pre-sessional courses

| ON CAMPUS COURSES | EAP C / INTERMEDIATE | EAP D / UPPER INTERMEDIATE | ONLINE COURSES | EAP B / PRE INTERMEDIATE | EAP C / INTERMEDIATE | EAP D / UPPER INTERMEDIATE |
|----------------------------|----------------------|----------------------------|----------------------------|--------------------------|----------------------|----------------------------|
| MINIMUM ENTRY REQUIREMENTS | IELTS 5.0 | IELTS 5.5 | MINIMUM ENTRY REQUIREMENTS | IELTS 4.5 | IELTS 5.0 | IELTS 5.5 |
| COURSE LENGTH | 10 Weeks | 5 Weeks | COURSE LENGTH | 12 Weeks | 10 Weeks | 8 Weeks |
| COURSE START DATE | June/July | August/September | COURSE START DATE | June | June | June |
| COURSE FEE | £1,990 | £990 | COURSE FEE | £2,990 | £1,990 | £990 |

Undergraduate and postgraduate degree courses require IELTS 6.0 with no element below 5.5 as part of the entry requirements.

Some courses require higher IELTS requirements, please see website for more details.

LEARN THE CULTURE TOO

Running alongside all EAP classes is our Social and Cultural Awareness programme. You will study issues of international, national, regional, and local importance via lectures, workshops and field trips to places of interest. If you are applying for full-time study, then you are recommended to complete one of our three online EAP Pre-Sessional courses to get the most out of your degree studies.

WHEN DO COURSES BEGIN?

Courses start between April - August and end in September and October in time for the start of term. There are also courses starting between September to November for those students who wish to start a degree in January.

A detailed outline is on the website at: sunderland.ac.uk/study/international/entry-language-requirements

**CONTINUE IMPROVING YOUR ENGLISH (ALONGSIDE YOUR STUDIES)**

English for Academic Purposes – in-sessional provision

We also provide free English for Academic Purposes (EAP) and English for Business Purposes (EBS) classes to support you during your studies at the University of Sunderland.

To find out more, go to sunderland.ac.uk
These courses are free to those students who are already registered on one of our courses.

ENGLISH FOR ACADEMIC PURPOSES AND ENGLISH FOR BUSINESS STUDIES

| | |
|-----------------------------------|-------------------|
| MINIMUM ENTRY REQUIREMENTS | IELTS From 5.5 |
| COURSE LENGTH | 15 Weeks |
| START DATE | October |
| COURSE FEE | Free* |

* This course is free to students who are already registered at the University of Sunderland.

NOT QUITE READY

FOR UK STUDY?

WE'LL HELP

YOU PREPARE

GET GUARANTEED ENTRY TO A UNIVERSITY OF SUNDERLAND DEGREE*

We offer a range of high-quality courses designed to prepare you for studying at Sunderland or at another UK university. We offer these programmes in partnership with ONCAMPUS Cambridge Education Group and we've been helping international students in this way since 1952.

ONCAMPUS SUNDERLAND

COULD YOU BENEFIT?

The programmes will help you if you do not currently meet the academic and/or English language requirements to enter your chosen degree course directly. By completing the programme you will get guaranteed progression* to some of the University's degree courses.



These comprehensive 25-hours per week academic and English programmes prepare you thoroughly for the demands of a UK degree. You'll be taught by specialist staff and will be allocated a personal tutor who will have regular meetings with you to help you progress.

CHOOSE YOUR PROGRAMME

We will help you choose the relevant ONCAMPUS programme for your intended level of study.

UNDERGRADUATE FOUNDATION PROGRAMME

Guaranteed progression* to Year 1 of a wide range of undergraduate degrees or the International Year One in Business and Management. The following pathways are offered:

- Business, Humanities and Social Sciences
- Engineering and Physical Sciences
- Life Sciences

Starts: September or January

Term: 3

English entry level: from 4.5 IELTS or equivalent

INTERNATIONAL YEAR ONE IN BUSINESS

Guaranteed progression* to Year 2 of selected Business degrees.

Starts: September or January

Terms: 3 or 4 terms

English entry level: from 5.0 IELTS (International English Language Testing Scheme) or equivalent

PRE MASTERS PROGRAMME

Guaranteed progression* to a wide range of masters degrees.

Starts: January, April, June or September

Terms: 1, 2 or 3 terms, subject to your level of English on entry and the level required to progress onto your chosen masters degree.

English entry level: from 4.5 IELTS or equivalent. Students with IELTS 4.0 can take a 4 term programme from June or September. English Language Programmes are available from 4.0 IELTS or equivalent.

To find out more, visit: oncampus.global/sunderland

*Guaranteed progression is subject to meeting the specified entry criteria for each University course.

SCHOLARSHIPS AND FEES

Sunderland offers such good value for high quality learning. Our fees are affordable and the cost of living in our region is one of the lowest in the country. You may also be eligible for a scholarship to supplement your own finances.

MAKE YOUR FUNDS GO FURTHER

Our competitive fees are guaranteed to stay the same for the duration of your studies.

From accommodation, transport costs and eating out, Sunderland is significantly cheaper than many other parts of the country.

You can use our free campus bus service which picks you up from your accommodation and drops you off at either the City Campus or The Sir Tom Cowie Campus.

SCHOLARSHIPS FOR INTERNATIONAL STUDENTS

- If you are studying on an undergraduate degree, you will receive a £1,400 scholarship in the form of a fee reduction in each year of your course (£1,000 for BSc (Hons) Nursing (Top-Up)).

Please note: this scholarship isn't applicable to students within the East Region. Please contact your local office for the latest scholarship information.

- Students on a postgraduate degree will receive a £900 scholarship in the form of a reduction to their tuition fees.
- To find out about scholarships that you may be entitled to, please contact your local office or see our website at sunderland.ac.uk/scholarships

POSTGRADUATE DISCOUNT - ALUMNI LOYALTY SCHOLARSHIP

All students will receive a 20% discount from the overall cost of studying on a postgraduate course if you have graduated from the University of Sunderland and return to study a full-time postgraduate degree at the University. This includes all graduates of a University of Sunderland programme studied with one of our TNE/Study Centres in other countries.



TUITION FEES FOR 2024/25

FOR INTERNATIONAL STUDENTS

| TYPE OF COURSES | 2024/25 INTERNATIONAL STUDENT FEES PER YEAR | SCHOLARSHIP FOR INTERNATIONAL STUDENTS PER YEAR | YOU PAY |
|---|--|---|---------|
| Full-time Undergraduate (Inc. Top-Up, Stage 3 and MPharm Courses) | £16,000 | £1,400 | £14,600 |
| Full-time Postgraduate | £16,500 | £900 | £15,600 |
| PGCE | £16,000 | £900 | £15,100 |
| MBA | £18,000 | £900 | £17,100 |
| MBA with PgCert | £20,500 | £900 | £19,600 |
| MSc Public Health and MSc Nursing | £17,400 | £900 | £16,500 |
| Study Abroad - Per Semester | £5,000 | N/A | £5,000 |

Please note: our fees and scholarships are correct at the time of print but may be subject to change. Please visit the University's website for the latest information on our fees and scholarships.



QUALIFYING TO STUDY AT SUNDERLAND

OUR REQUIREMENTS FOR ENTRY AND ENGLISH LANGUAGE ACADEMIC QUALIFICATIONS

The University recognises all internationally accredited qualifications. We will consider your application on its own merits and take into account other qualities you may have such as work and life experience.

For an undergraduate degree course, you will need the equivalent of a minimum of two UK General Certificate of Education (GCE) Advanced Level passes. Please see individual course information on the website for more details.

You can also apply for advanced entry to an undergraduate course (for example, level 2 or 3) if you have a diploma equivalent to one or two years of a UK honours degree in a relevant subject.

For postgraduate courses, you need to have a degree equivalent to a UK honours degree and, in some cases, relevant work experience.

ENGLISH LANGUAGE REQUIREMENTS

If English is not your first language, you will need to have achieved a score of 6 overall in the International English Language Testing Scheme

(IELTS) with all element scores at 5.5 or higher. Please note: some courses require a higher level of English language – please read the relevant course description and particularly the course entry requirements.

We also accept Secure English Language Test (SELT) as recognised by the Home Office approved SELT provider. Your element scores need to be equivalent to those required for IELTS entry.

If you are applying for a Pre-sessional English Language course, you will need to have achieved a score of 4 or higher in IELTS for UKVI to be accepted on one of our pre-sessional courses. It must be from an approved UKVI test centre listed on the UKVI website: visit.gov.uk and search for 'approved English language tests'.

Please note: not all English language requirements are listed. To find out more, please contact the Student Administration team.

Email: internationaladmissions@sunderland.ac.uk

HOW TO APPLY

MADE THE DECISION TO JOIN US? GREAT! HERE'S HOW YOU CAN MAKE IT HAPPEN.

You can either apply directly to the University via the online apply link on the course you are interested in or contact your local office or agent in your home country. As places on our courses are limited and many popular courses fill up early, we encourage all applicants to meet any conditions on their offer as soon as they are able to in order to secure their place.

APPLYING DIRECTLY TO THE UNIVERSITY

1. Go to sunderland.ac.uk, search for your course at the top of the course page and click 'apply now'.
2. Please click on the apply now option relevant to you.
3. Select 'new user' and enter your details. Once you have submitted your new user details you will need to check your email to continue your application. This email will contain your unique username so you can be kept up-to-date with any new changes to your application. You can also contact our local office who can assist you with your application.
4. You will receive an email with your login details for 'myApplication', your online portal (sunderland.ac.uk/myapplication), which allows you to manage and track your application from start to finish.

HELP FOR STUDENTS WITH DISABILITIES OR SPECIFIC LEARNING DIFFICULTIES

We encourage you to declare any health or wellbeing issues or disabilities, so we can support you in the best way, and decide whether any reasonable adjustments are required prior to you starting your course.

Email: disability.support@sunderland.ac.uk
Call +44 (0)191 515 2952

APPLYING FOR A VISA TO STUDY IN THE UK

The UK Visas and Immigration (UKVI) rules are controlled by a Points-Based System (PBS). Student visa is for all international students, including EU, EEA and Swiss students coming to the UK to study.

To apply for a student visa, you will require a Confirmation of Acceptance for Studies (CAS) letter together with the original copies of all supporting documents. CAS letters are only valid for six months and you cannot apply for a visa earlier than six months before your course starts.

Please note: CAS letters will only be issued once all conditions of offer are met.

WHEN YOUR VISA IS ISSUED

It will be to study at the University of Sunderland and will show the University's Sponsor Licence Number. If you wish to study at an alternative higher education institution in the UK, you will need to apply for and obtain a new visa for the institution concerned before you would be allowed to enrol.

Under the UKVI regulations, the University of Sunderland will be required to report any student who obtains entry clearance on the basis of our offer but does not enrol at the start of their course. Students who enrol at the University of Sunderland but later decide to withdraw, interrupt or suspend their studies, or who fail to attend their classes for significant periods, will also be reported to the UKVI.

For more information about the immigration process:

UK Visas and Immigration: gov.uk/browse/visas-immigration/study-visas

UK CISA (Council for International Student Affairs): ukcisa.org.uk/

Email: international.office@sunderland.ac.uk

GRADUATE VISA

Graduates can apply for a two-year Graduate visa, expanding opportunities for international graduates to build successful careers in the UK.

International students at British universities can stay in the UK for up to two years after graduating. Our International Student Support team can help you towards the end of your course if you are interested in applying for this.

For the latest updates and to check your eligibility please visit: [gov.uk](https://www.gov.uk)

STUDY ABROAD

If you are coming to study on the course as part of your degree from an overseas institution, and you will be studying in the UK for six months or more, you will need a student visa. You will receive a Confirmation of Acceptance for Studies (CAS) letter which you will need to submit with your visa application.

If you are studying with us for one semester only, you can enter the UK as a Short Term Student. You don't need a student visa to study with us for one semester.

You may, however, need to obtain entry clearance or apply for your Short Term Student permissions before you come to

Please check the UKVI website for more information about visa requirements.

[gov.uk/government/organisations/uk-visas-and-immigration](https://www.gov.uk/government/organisations/uk-visas-and-immigration)

POSTGRADUATE RESEARCH

We welcome applications from students with a wide variety of backgrounds and offer supervision in numerous subject areas. To enquire about a subject area, go to sunderland.ac.uk/study/postgraduate-research for further information.

When making an application for a research degree, you should complete an application form which must include a research proposal. You can apply online at:

sunderland.ac.uk/study/postgraduate-research

For more information about doctoral study, please contact the Graduate Research Support team at: grs@sunderland.ac.uk

UNDERGRADUATE APPLICANT JOURNEY

INTERNATIONAL STUDENTS



1) VISIT THE UOS WEBSITE

Browse the 'Subject areas and courses' section in our website to find out the course that best fits your skills and career aspirations.



2) SUBMITTING AN APPLICATION

Once you've chosen your preferred course, follow the 'apply now' link on the top right-hand corner to submit your application, together with any applicable qualifications. The relevant department will review your application and make a decision.



5) BOOKING ACCOMMODATION

University managed accommodation can be found on our website. You also have the option to stay in private accommodation in and around Sunderland. It is strongly advised that your accommodation is confirmed before travelling. The earlier you book, the more options you will have.



6) RECEIVING A CAS

You will be issued with an unconditional offer letter and a CAS once you've met all of the conditions of your offer.



7) APPLYING FOR A VISA (IF REQUIRED)

If you need to apply for a visa to study with us, you can apply once you've got your CAS. You can apply up to six months before your course starts. We recommend you apply as soon as possible.



10) ARRIVE IN THE UK

Complete in-person enrolment by bringing original copies of your documents to the campus and you will then have access to your timetable in order to attend your classes.



3) RECEIVING AN OFFER

If you receive a conditional offer, it means your application was successful and you should read it carefully to understand your next steps.



4) UPLOAD YOUR DOCUMENTS

Upon accepting your conditional offer, you must upload all relevant documents to the CAS Shield platform to meet the conditions of your offer. Our Immigration team will review your documents and will be in touch should they require additional information.



8) BOOKING YOUR TRAVEL TO THE UK

Make sure to arrive in time to attend the start date of your course. We offer an Airport Arrival Service from Newcastle International Airport on certain dates and times during arrival weekends.



9) ONLINE ENROLMENT

Pay any outstanding fees in order to complete your online enrolment via your e:Vision application portal.

COME HERE.
GET LIFELONG FRIENDSHIPS.
GET A CITY BY THE SEA.
GET SIGHT OF YOUR FUTURE.
GET MORE.



MEET THE LOCALS

People from the north-east of England will be well aware of the name Mackems. The word Mackem derives from 'Mack 'em' or 'make them' and refers to Sunderland's proud history of making and building ships. Sunderland people 'Mackems', still make things – from software solutions and glass, to millions of Nissan cars.

The next few pages may give you some helpful insights into the friendly people of Sunderland.



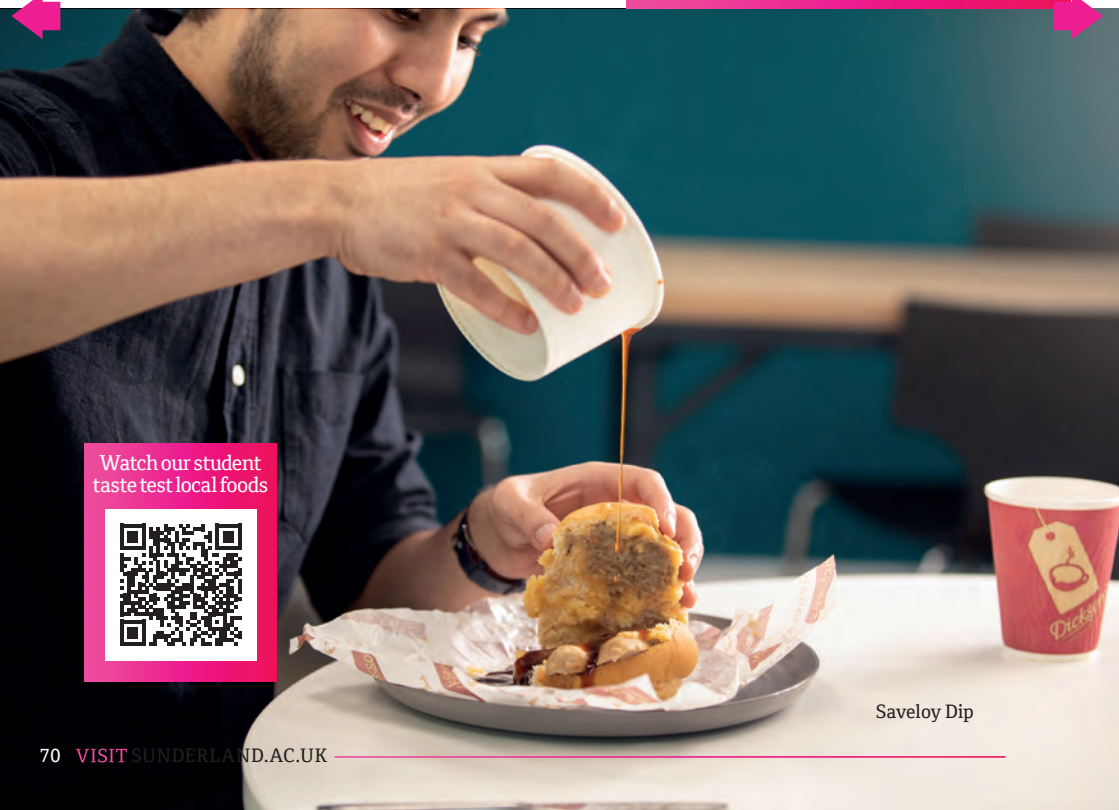
WHAT YOU CAN EXPECT FROM THE PEOPLE OF



Pink Slice

LOCAL FOOD

You've heard of the phrase "When in Rome" but "When in Sunderland" you must sample some of the local delicacies. You could try the Pink Slice or the Saveloy Dip.



Watch our student taste test local foods



Saveloy Dip

LOCAL USE OF WORDS

If you ring a UK-based call centre, the chances are that you could be talking to someone from the region.

Sunderland is a major hub for the contact centre industry due to the attractiveness of the regional accent and the friendliness of the people.

Here's a guide to a few common Sunderland phrases and words.

Ha'way – “Come on” or “Let's go”

Marra – your best mate

Aye – “yes”

Nor – “no”

Dinnit – “DON'T”

A'reet – “alright”

Clays – CLOTHES

Ganzie – a woolly jumper

Fish lot – fish and chips

THINK COURSE
THINK CAREER
THINK SUNDERLAND

SABRINA BAHARIN

BSc (HONS) Cosmetic Science

“

I really love Sunderland. It's a very calm, convenient and nice place for a student to stay focused on their studies. I have made many friends from other countries, and we support each other throughout our studies, and socially too.

The lecturers who teach on this course are very supportive and always willing to give advice and help whenever we need it. I am really enjoying my time here.

For now, I'm going with the flow, but after graduation I hope to work in Europe, and eventually create my own brand of cosmetic products. ”

Get More:

“Making the decision to come and study here. I've never looked back since coming to study in Sunderland.”



A SELECTION OF FAMOUS PEOPLE FROM THE REGION

Jill Scott



In 2022, the England women's football team won the European Championship – and on the team was Sunderland-born Jill Scott. Jill was made an Honorary Graduate by the University in 2018.

Jill's career started in 2004 with Sunderland AFC, then she went on to play for Manchester City. Her honours include winning the Women's Super League and FA Cup, and winner of I'm A Celebrity Get Me Out Of Here 2022. Jill believes that there are now many more opportunities available for girls to participate in football.

- Emeli Sandé MBE (Singer and BRIT Awards Winner)
- Jordan Pickford, Jordan Henderson, Steph Houghton (England football's sporting elite)
- Bryan Ferry CBE (Singer, Roxy Music)
- Sir Joseph Swan (Inventor of the light bulb)
- Dave Stewart (Guitarist, Eurythmics)
- The Venerable Bede (greatest Anglo-Saxon scholar and monk)
- Kate Adie CBE (former Chief News Correspondent for the BBC and Honorary Graduate)
- George Clarke (Architect, Presenter and Honorary Graduate)
- Lauren Laverne (Presenter, Singer and Honorary Graduate)
- Terry Deary (Horrible Histories author, BAFTA Award Winner and Honorary Graduate)
- Gareth Pugh (International Fashion Designer)

“With my background and now as an employer and a CEO, I hope that I can bring something relevant back to the University and do the role justice.”

**Leanne Cahill,
Chancellor of the University of
Sunderland**



All course information is correct at the time of print July 2023, but may be subject to change. Please check our website for all of the latest information.

Scan to learn more about the University's approach to hybrid learning through online and on campus teaching:



OUR COURSES

Our list of courses are taught at undergraduate or postgraduate level.

A typical full-time undergraduate degree usually takes three years to complete and a postgraduate course takes one year. However, if you have completed part of

a bachelor degree elsewhere, we offer advanced entry to a number of our courses. For more information, please contact your local representative.

For more detailed information on any of the courses shown in this prospectus, visit our website and key in the web search code on our homepage at sunderland.ac.uk

KEY

UG Undergraduate

PG Postgraduate

IDL Distance Learning

| COURSE | LEVEL | WEB SEARCH CODE | COURSE LENGTH | CAMPUS OR OTHER LOCATION | COURSE PRICE |
|---|-------|-----------------|---------------|--------------------------|--------------|
| ART AND DESIGN | | | | | |
| BA (Hons) Animation and Games Art | UG | W221 | 3 Years | Sir Tom Cowie | See page 62 |
| BA (Hons) Artist Designer Maker: Glass and Ceramics | UG | W260 | 3 Years | Sir Tom Cowie | See page 62 |
| BA (Hons) Fashion Design and Promotion | UG | WN25 | 3 Years | City | See page 62 |
| BA (Hons) Fine Art | UG | W100 | 3 Years | City | See page 62 |
| BA (Hons) Graphic Design | UG | W214 | 3 Years | City | See page 62 |
| BA (Hons) Illustration and Design | UG | W215 | 3 Years | City | See page 62 |
| BA (Hons) Photography, Video and Digital Imaging | UG | W651 | 3 Years | Sir Tom Cowie | See page 62 |

*Includes an optional placement year. *Please visit the website for further information on who can apply for this course. We may offer a skype entrance interview for your chosen degree if you do not meet the entry requirements. #Includes an optional placement year (subject to availability).

COURSE LISTING

| COURSE | LEVEL | WEB SEARCH CODE | COURSE LENGTH | CAMPUS OR OTHER LOCATION | COURSE PRICE |
|--|-------|-----------------|---------------|--------------------------|--------------|
| MA Design with the following pathways: MA Design: Illustration MA Design: Graphics MA Design: Fashion MA Design: Animation MA Design: Games Art | PG | CID156 | 1 Year | City | See page 62 |
| MA Visual Practice with the following pathways: MA Visual Practice: Contemporary Fine Art MA Visual Practice: Glass MA Visual Practice: Ceramics MA Visual Practice: Photography | PG | CID1405 | 1 Year | Sir Tom Cowie | See page 62 |
| BUSINESS | | | | | |
| BA (Hons) Accounting and Finance | UG | NN41 | 3/4 Years * | Sir Tom Cowie | See page 62 |
| BA (Hons) Accounting and Financial Management (Top-Up) | UG | NN43 | 1 Year | Sir Tom Cowie | See page 62 |
| BA (Hons) Business and Financial Management | UG | NN1H | 3/4 Years * | Sir Tom Cowie | See page 62 |
| BA (Hons) Business and HRM | UG | NN1P | 3/4 Years * | Sir Tom Cowie | See page 62 |
| BA (Hons) Business and Management | UG | NN2C | 3/4 Years * | Sir Tom Cowie | See page 62 |
| BA (Hons) Business and Management (Stage 3) | UG | NNB3 | 1 Year | Sir Tom Cowie | See page 62 |
| BA (Hons) Business and Marketing Management | UG | NN1N | 3/4 Years * | Sir Tom Cowie | See page 62 |
| BA (Hons) Business and Marketing Management (Stage 3) | UG | NNM3 | 1 Year | Sir Tom Cowie | See page 62 |
| MA Marketing | PG | CID674 | 1 Year | Sir Tom Cowie | See page 62 |
| MA Marketing (Professional Practice) | PG | CID1369 | 2 Years | Sir Tom Cowie | See website |
| MA/MSc Extended Award | PG | CID1278 | 15 Months | Sir Tom Cowie | See page 62 |
| MBA Master of Business Administration (Top-Up) | PG | CID1340 | 7 Months | Sir Tom Cowie | See website |
| MBA Master of Business Administration with PgCert | PG | CID1336 | 2 Years | Sir Tom Cowie | See page 62 |
| MBA Master of Business Administration (Generic) | PG | CID116 | 1 Year | Sir Tom Cowie | See page 62 |
| MBA Master of Business Administration (Finance) | PG | CID1028 | 1 Year | Sir Tom Cowie | See page 62 |
| MBA Master of Business Administration (Human Resource Management) | PG | CID1030 | 1 Year | Sir Tom Cowie | See page 62 |
| MBA Master of Business Administration (Marketing) | PG | CID1029 | 1 Year | Sir Tom Cowie | See page 62 |
| MBA Master of Business Administration (Professional Practice) | PG | CID1322 | 24 Months | Sir Tom Cowie | See page 62 |
| MBA Master of Business Administration (Sports Management) | PG | CID1507 | 1 Year | Sir Tom Cowie | See page 62 |
| MSc Finance and Management | PG | CID1167 | 1 Year | Sir Tom Cowie | See page 62 |
| MSc Human Resource Management (CIPD Accredited) | PG | CID125 | 1 Year | Sir Tom Cowie | See page 62 |
| MSc International Business Management | PG | CID1280 | 1 Year | Sir Tom Cowie | See page 62 |
| COMPUTING | | | | | |
| BSc (Hons) Computer Science | UG | G401 | 3/4 Years * | Sir Tom Cowie | See page 62 |
| BSc (Hons) Computer Systems Engineering (Top-Up) | UG | G602 | 1 Year | Sir Tom Cowie | See page 62 |
| BSc (Hons) Cybersecurity and Digital Forensics | UG | FG45 | 3/4 Years * | Sir Tom Cowie | See page 62 |
| BSc (Hons) Game Development | UG | GG46 | 3/4 Years * | Sir Tom Cowie | See page 62 |
| BSc (Hons) Network Systems Engineering (Top-Up) | UG | GH46 | 1 Year | Sir Tom Cowie | See page 62 |
| MSc Applied Computing | PG | CID1432 | 2 Years | Sir Tom Cowie | See page 62 |
| MSc Applied Cybersecurity | PG | CID1429 | 2 Years | Sir Tom Cowie | See page 62 |
| MSc Applied Data Science | PG | CID1371 | 2 Years | Sir Tom Cowie | See page 62 |
| MSc Computing | PG | CID128 | 1 Year | Sir Tom Cowie | See page 62 |
| MSc Cybersecurity | PG | CID1267 | 1 Year | Sir Tom Cowie | See page 62 |

| COURSE | LEVEL | WEB SEARCH CODE | COURSE LENGTH | CAMPUS OR OTHER LOCATION | COURSE PRICE |
|--|-------|-----------------|---------------|--------------------------|--------------|
| MSc Data Science | PG | CID1258 | 1 Year | Sir Tom Cowie | See page 62 |
| CRIME, POLICING AND INVESTIGATION | | | | | |
| BSc (Hons) Criminology | UG | M930 | 3 Years | Sir Tom Cowie | See page 62 |
| BSc (Hons) Criminology: Criminology and Criminal Justice | UG | M931 | 3 Years | Sir Tom Cowie | See page 62 |
| BSc (Hons) Criminology: Inequality and Social Justice | UG | M933 | 3 Years | Sir Tom Cowie | See page 62 |
| BSc (Hons) Criminology: Vulnerability and Social Care | UG | M932 | 3 Years | Sir Tom Cowie | See page 62 |
| BSc (Hons) Policing Studies (Top-Up) | UG | P1P5 | 1 Year | Sir Tom Cowie | See page 62 |
| BSc (Hons) Professional Policing (Accelerated Degree) | UG | P1P3 | 2 Years | Sir Tom Cowie | See page 62 |
| BSc (Hons) Professional Policing | UG | P1P2 | 3 Years | Sir Tom Cowie | See page 62 |
| MSc Leadership in Criminal Justice and Policing | PG | CID1421 | 1 Year | Sir Tom Cowie | See page 62 |
| ENGINEERING | | | | | |
| BEng (Hons) Automotive Engineering (Top-Up) | UG | H3W1 | 1 Year | Sir Tom Cowie | See page 62 |
| BEng (Hons) Engineering Technologies | UG | H110 | 3/4 Years* | Sir Tom Cowie | See page 62 |
| BEng (Hons) Electronic and Electrical Engineering | UG | H601 | 3/4 Years * | Sir Tom Cowie | See page 62 |
| BEng (Hons) Electronic and Electrical Engineering (Top-Up) | UG | H600 | 1 Year | Sir Tom Cowie | See page 62 |
| BEng (Hons) Manufacturing Engineering (Top-Up) | UG | H700 | 1 Year | Sir Tom Cowie | See page 62 |
| BEng (Hons) Mechanical Engineering | UG | H3W2 | 3/4 Years * | Sir Tom Cowie | See page 62 |
| BEng (Hons) Mechanical Engineering (Top-Up) | UG | H3W5 | 1 Year | Sir Tom Cowie | See page 62 |
| MSc Applied Project Management | PG | CID1420 | 2 Years | Sir Tom Cowie | See website |
| MSc Engineering Management | PG | CID158 | 15 Months | Sir Tom Cowie | See page 62 |
| MSc Project Management | PG | CID133 | 15 Months | Sir Tom Cowie | See page 62 |
| ENGLISH | | | | | |
| BA (Hons) English: Creative and Professional Writing | UG | Q300 | 3/6 Years | Sir Tom Cowie | See page 62 |
| MA English Studies | PG | CID143 | 1 Year | Sir Tom Cowie | See page 62 |
| HEALTH AND CLINICAL SCIENCES | | | | | |
| BSc (Hons) Applied Biomedical Science | UG | See website | 4 Years | City | See website |
| BSc (Hons) Biomedical Science | UG | B940 | 3/4 Years * | City | See page 62 |
| BSc (Hons) Healthcare Sciences: Physiological Sciences/Life Sciences-Audiology or Cardiac Physiology | UG | See website | 3 Years | City | See website |
| BSc (Hons) Healthcare Sciences: Blood Science/Cellular Science/Genetic Science/Infection Science | UG | See website | 3 Years | City | See website |
| BSc (Hons) Physiological Sciences | UG | B120 | 3 Years | City | See page 62 |
| HOSPITALITY, EVENTS, AVIATION AND TOURISM | | | | | |
| BSc (Hons) Esports Event Management | UG | NN1S | 3/4 Years* | Sir Tom Cowie | See page 62 |
| BSc (Hons) International Tourism and Hospitality Management | UG | NN28 | 3/4 Years * | Sir Tom Cowie | See page 62 |
| BSc (Hons) International Tourism and Hospitality Management (Top-Up) | UG | NN82 | 1 Year | Sir Tom Cowie | See page 62 |
| BSc (Hons) Tourism and Aviation Management | UG | NN29 | 3/4 Years * | Sir Tom Cowie | See page 62 |
| MSc Sustainable Tourism | PG | CID1437 | 1 Year | Sir Tom Cowie | See page 62 |
| MSc Tourism and Aviation | PG | CID1312 | 1 Year | Sir Tom Cowie | See page 62 |

*Includes an optional placement year. ^Please visit the website for further information on who can apply for this course. We may offer a skype entrance interview for your chosen degree if you do not meet the entry requirements. #Includes an optional placement year (subject to availability).

COURSE LISTING

| COURSE | LEVEL | WEB SEARCH CODE | COURSE LENGTH | CAMPUS OR OTHER LOCATION | COURSE PRICE |
|---|-------|-----------------|---------------|--------------------------|--------------|
| MSc Tourism and Events | PG | CID916 | 1 Year | Sir Tom Cowie | See page 62 |
| MSc Tourism and Hospitality | PG | CID918 | 1 Year | Sir Tom Cowie | See page 62 |
| JOURNALISM AND PR | | | | | |
| BA (Hons) Fashion Journalism | UG | P507 | 3 Years | Sir Tom Cowie | See page 62 |
| BA (Hons) Journalism | UG | P500 | 3 Years | Sir Tom Cowie | See page 62 |
| BA (Hons) Social Media Management | UG | P508 | 3 Years | Sir Tom Cowie | See page 62 |
| BA (Hons) Sports Journalism | UG | P505 | 3 Year | Sir Tom Cowie | See page 62 |
| MA Journalism / MA Journalism (Sports) | PG | CID921 | 1 Year | Sir Tom Cowie | See page 62 |
| MA Public Relations | PG | CID986 | 1 Year | Sir Tom Cowie | See page 62 |
| LAW | | | | | |
| LLB (Hons) Law | UG | M100 | 3 Years | Sir Tom Cowie | See page 62 |
| LLM Commercial Law and International Trade | PG | CID1248 | 1 Year | Sir Tom Cowie | See page 62 |
| LLM Criminal Law and Procedure | PG | CID671 | 1 Year | Sir Tom Cowie | See page 62 |
| LLM International Human Rights | PG | CID925 | 1 Year | Sir Tom Cowie | See page 62 |
| LLM Law | PG | CID1252 | 1 Year | Sir Tom Cowie | See page 62 |
| LLM Legal Practice | PG | CID1254 | 1 Year | Sir Tom Cowie | See page 62 |
| LLM Terrorism and Cyber Warfare | PG | CID1505 | 1 Year | Sir Tom Cowie | See page 62 |
| MEDIA | | | | | |
| BA (Hons) Film and Media | UG | PW36 | 3 Years | Sir Tom Cowie | See page 62 |
| BA (Hons) Film Production | UG | W615 | 3 Years | Sir Tom Cowie | See page 62 |
| BA (Hons) Mass Communications (Top-Up) | UG | P391 | 1 Year | Sir Tom Cowie | See page 62 |
| BA (Hons) Media, Culture and Communication | UG | PP39 | 3 Years | Sir Tom Cowie | See page 62 |
| BA (Hons) Media Production | UG | HP63 | 3 Years | Sir Tom Cowie | See page 62 |
| MA Media Production (Film and TV) | PG | CID212 | 1 Year | Sir Tom Cowie | See page 62 |
| MA Public Relations | PG | CID986 | 1 Year | Sir Tom Cowie | See page 62 |
| MA Radio, Audio and Podcasting | PG | CID352 | 1 Year | Sir Tom Cowie | See page 62 |
| NURSING | | | | | |
| BSc (Hons) Nursing (Top-Up) | UG | B700 | 1 Year | City | See page 62 |
| MSc Nursing | PG | CID1083 | 1 Year | City | See page 62 |
| PERFORMING ARTS | | | | | |
| BA (Hons) Music (Top-Up) | UG | W301 | 1 Year | City | See page 62 |
| BA (Hons) Performing Arts | UG | W430 | 3 Years | City | See page 62 |
| BA (Hons) Screen Performance | UG | W600 | 3 Years | City | See page 62 |
| PHARMACY, PHARMACEUTICAL AND COSMETIC SCIENCES | | | | | |
| BSc (Hons) Biochemistry | UG | C700 | 3/4 Years * | City | See page 62 |
| BSc (Hons) Biopharmaceutical Science | UG | F100 | 3/4 Years * | City | See page 62 |
| BSc (Hons) Cosmetic Science | UG | B3R5 | 3/4 Years * | City | See page 62 |
| BSc (Hons) Medicinal Chemistry | UG | F150 | 3/4 Years * | City | See page 62 |
| MPharm Pharmacy | UG | B230 | 4 Years | City | See page 62 |
| MSc Cosmetic Science | PG | CID1331 | 1 Year | City | See page 62 |

| COURSE | LEVEL | WEB SEARCH CODE | COURSE LENGTH | CAMPUS OR OTHER LOCATION | COURSE PRICE |
|--|-------|-----------------|---------------|--------------------------|--------------|
| MSc Drug Discovery and Development | PG | CID995 | 1 Year | City | See page 62 |
| MSc Pharmaceutical and Biopharmaceutical Formulations | PG | CID1101 | 1 Year | City | See page 62 |
| MSc/PGDip Pharmaceutical Sciences for the Overseas Pharmacist Assessment Programme | PG | CID1035 | 1 Year | City | See website |
| PSYCHOLOGY | | | | | |
| BSc (Hons) Clinical Psychology | UG | C842 | 3 Years | City | See page 62 |
| BA (Hons) Counselling (Top-Up) | UG | CID943 | 1 Year | City | See page 62 |
| BSc (Hons) Forensic Psychology | UG | C816 | 3 Years | City | See page 62 |
| BSc (Hons) Psychology | UG | C800 | 3 Years | City | See page 62 |
| BSc (Hons) Psychology with Counselling | UG | C8BX | 3 Years | City | See page 62 |
| MSc Psychology (Conversion) | PG | CID210 | 1 Year | City | See page 62 |
| MSc Psychological Research Methods | PG | CID1108 | 1 Year | City | See page 62 |
| PUBLIC HEALTH | | | | | |
| MSc Public Health | PG | CID722 | 1 Year | City | See page 62 |
| SOCIAL SCIENCES | | | | | |
| BA (Hons) Childhood and Society Studies (Top-Up) | UG | X410 | 1 Year | Sir Tom Cowie | See page 62 |
| BA (Hons) Childhood Studies | UG | X310 | 3 Years | Sir Tom Cowie | See page 62 |
| BA (Hons) Community and Youth Work Studies | UG | L522 | 3 Years | Sir Tom Cowie | See page 62 |
| BSc (Hons) Health and Social Care | UG | L510 | 3 Years | Sir Tom Cowie | See page 62 |
| BA (Hons) Social Work | UG | L500 | 3 Years | Sir Tom Cowie | See page 62 |
| MA Childhood and Youth Studies | PG | CID1349 | 1 Year | Sir Tom Cowie | See page 62 |
| MSc Inequality and Society | PG | CID1330 | 1 Year | Sir Tom Cowie | See page 62 |
| MA Social Work | PG | CID1191 | 2 Years | Sir Tom Cowie | See website |
| SPORT AND EXERCISE SCIENCES | | | | | |
| BSc (Hons) Sport and Exercise Sciences | UG | C601 | 3 Years | City | See page 62 |
| BSc (Hons) Sports Coaching and Physical Education | UG | C612 | 3 Years | City | See page 62 |
| MSc Sport and Exercise Sciences | PG | CID1081 | 1 Year | City | See page 62 |
| TEACHER TRAINING AND EDUCATION | | | | | |
| BA (Hons) Education Studies | UG | L9N8 | 3 Years | Sir Tom Cowie | See page 62 |
| BSc (Hons) Mathematics Education (11-16 Years) with QTS | UG | XG12 | 3 Years | Sir Tom Cowie | See page 62 |
| BSc (Hons) Physical Education with QTS | UG | P1X1 | 3 Years | Sir Tom Cowie | See page 62 |
| BA (Hons) Primary Education with QTS | UG | X122 | 3 Years | Sir Tom Cowie | See page 62 |
| BA (Hons) Primary Education with SEND | UG | X124 | 3 Years | Sir Tom Cowie | See page 62 |
| MA Education | PG | CID825 | 1 Year | Sir Tom Cowie | See page 62 |
| MA International Education (Part-time only) | PG | CID1033 | 2 Years | IDL | See website |
| MA Special Educational Needs, Disability and Inclusion | PG | CID1496 | 2 Years | IDL | See website |
| MA Teaching English to Speakers of Other Languages (TESOL) | PG | CID472 | 1 Year | Sir Tom Cowie | See page 62 |
| MA Teaching English to Speakers of Other Languages (TESOL) | PG | CID625 | 18 Months | IDL | See website |
| PGCE Business Education | PG | N1X1 | 1 Year | Sir Tom Cowie | See page 62 |
| PGCE Computer Science Secondary Education | PG | IX99 | 1 Year | Sir Tom Cowie | See page 62 |

*Includes an optional placement year. ^Please visit the website for further information on who can apply for this course. We may offer a skype entrance interview for your chosen degree if you do not meet the entry requirements. #Includes an optional placement year (subject to availability).

COURSE LISTING

| COURSE | LEVEL | WEB SEARCH CODE | COURSE LENGTH | CAMPUS OR OTHER LOCATION | COURSE PRICE |
|--|-------|-----------------|---------------|--------------------------|--------------|
| PGCE Early Years Teaching | PG | CID1208 | 36 Weeks | IDL | See website |
| PGCE Education | PG | CID1032 | 36 Weeks | IDL | See page 62 |
| PGCE English Secondary Education | PG | Q3X1 | 1 Year | Sir Tom Cowie | See page 62 |
| PGCE Geography Secondary Education | PG | F8X1 | 1 Year | Sir Tom Cowie | See page 62 |
| PGCE History Secondary Education | PG | 3FKN | 1 Year | Sir Tom Cowie | See page 62 |
| PGCE Mathematics Secondary Education | PG | G1X1 | 1 Year | Sir Tom Cowie | See page 62 |
| PGCE Post Compulsory Education and Training (PCET) | PG | X341 | 1 Year | Sir Tom Cowie | See page 62 |
| PGCE Primary Education | PG | X100 | 1 Year | Sir Tom Cowie | See page 62 |
| PGCE Science with Biology Secondary Education | PG | C1X1 | 1 Year | Sir Tom Cowie | See page 62 |
| PGCE Science with Chemistry Secondary Education | PG | F1X1 | 1 Year | Sir Tom Cowie | See page 62 |
| PGCE Science with Physics Secondary Education | PG | F3X1 | 1 Year | Sir Tom Cowie | See page 62 |
| PGCE Early Years Teaching | PG | CID1208 | 36 Weeks | IDL | See website |
| PgCert in Special Educational Needs and Disabilities | PG | CID1288 | 1 Year | IDL | See website |

ONLINE INTERNATIONAL OPEN DAYS

You'll receive a warm welcome at our online open days, where you can learn about our courses, listen to our expert academics during live talks, take part in Q&A sessions, chat to current students, explore our facilities and find out what the University really has to offer. Register for our next online International Open Day at:

sunderland.ac.uk/open-days

If you can't join one of our dates, please visit our Virtual Campus Tour at: sunderland.ac.uk/virtualtour

You are also invited to join our monthly Global Education Forum which features panels of students, academics and industry experts covering a range of topics. Register at: sunderland.ac.uk/study/international/get-ahead-events/

If you would like to know more about studying and student life at the University, our staff and students are available to answer all of your queries.



Please scan to start a conversation with staff or students

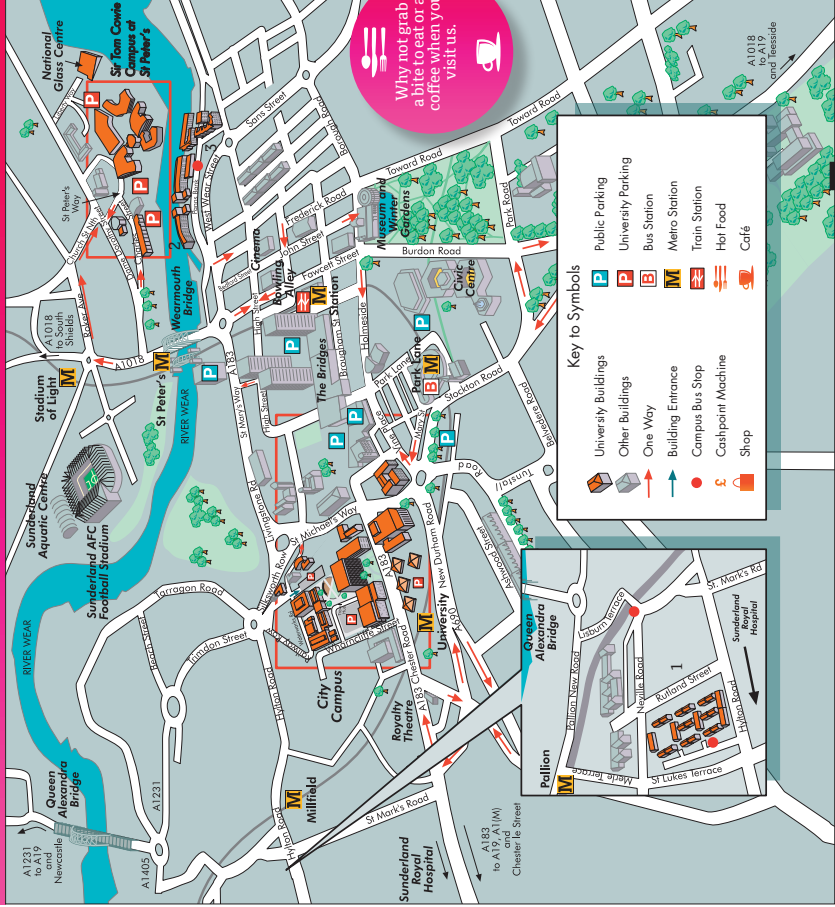
To download a copy of the latest version of the international prospectus please visit sunderland.ac.uk/prospectus



CITY OF SUNDERLAND AND UNIVERSITY CAMPUSES



University of Sunderland



Why not grab a bite to eat or a coffee when you visit us.

Key to Symbols

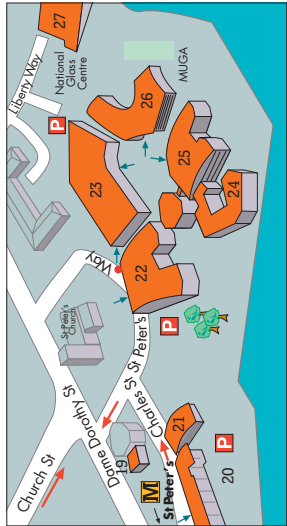
| | |
|--|----------------------|
| | University Buildings |
| | Other Buildings |
| | One Way |
| | Building Entrance |
| | Campus Bus Stop |
| | Cashpoint Machine |
| | Shop |
| | Public Parking |
| | University Parking |
| | Bus Station |
| | Metro Station |
| | Train Station |
| | Hot Food |
| | Cafe |

KEY TO BUILDINGS

- ACCOMMODATION**
- 1 Clanny House
 - 2 Panns Bank (Hart Court & Douglas Court)
 - 3 Scotia Quay (Allan House & Russell House)
- CITY CAMPUS**
- 4 City Space
 - 5 Helen Nickolls House
 - 6 St Mary's Exchange
 - 7 St Mary's Nursery
 - 8 St Mary's Nursery
 - 9 Edinburgh Building
- The John Dawson Sciences Complex**
- 10 Gateway
 - 11 Technology Park
 - 12 Murray Library
 - 13 Priestman Building
 - 14 Darwin Building
 - 15 Dale Building
 - 16 Pastour Building
 - 17 Fleming Building
 - 18 Anatomy Centre
 - 19 Interbank House (inc Interbank Chaplancy Centre)
 - 20 St Peter's Gate (Sunderland Science Park)
 - 21 Reg Vardy Centre
 - 22 The David Goldman Technology Centre
 - 23 St Peter's Library
 - 24 Prospect Building
 - 25 Inc. St. John Cowie (The John Cowie Centre)
 - 26 David Pattman Media Centre
 - 27 National Glass Centre



City Campus



Sir Tom Cowie Campus

© University of Sunderland. No reproduction by any means allowed without the written permission of External Relations, University of Sunderland. April 2023.

OUR LOCATIONS

SUNDERLAND

UNIVERSITY OF SUNDERLAND

1st Floor, The Gateway
City Campus, Chester Road
Sunderland, SR1 3SD
United Kingdom
Tel: +44 (0)191 515 3000
Email: international.office@sunderland.ac.uk
sunderland.ac.uk

LONDON

UNIVERSITY OF SUNDERLAND IN LONDON

197 Marsh Wall
Docklands
London, E14 9SG
United Kingdom
Tel: +44 (0)20 7531 7333
Email: recruitment-london@sunderland.ac.uk
london.sunderland.ac.uk

HONG KONG

UNIVERSITY OF SUNDERLAND IN HONG KONG

9/F South China Building
1-3 Wyndham Street
Central Hong Kong
Tel: +852 2992 0133
Email: enquire@sunderland.edu.hk
sunderland.edu.hk

Contact the University in your home country.
If your home country is not listed, please contact
us direct at one of the relevant locations above.

**FOR THE UNIVERSITY OF SUNDERLAND'S FULL
TERMS AND CONDITIONS RELATING TO
THIS PROSPECTUS PLEASE VISIT:
SUNDERLAND.AC.UK/TERMS-AND-CONDITIONS**

CONTACT THE UNIVERSITY IN YOUR HOME COUNTRY

EAST ASIA

BEIJING OFFICE

University of Sunderland
RM B07, China Merchants Tower
Chaoyang District, Beijing 100022
P.R. China
Tel: +86 13581538579
Email: china.office@sunderland.ac.uk

GUANGZHOU OFFICE

A06, Building B
Zhonghua International Center
No.33, Zhongshan Third Road
Yuexiu District, Guangzhou City
Guangdong Province 510040
P. R. China
Tel: +86 1345 0481 870
Email: southchina@sunderland.ac.uk

HANGZHOU CONTACT POINT

Wang Na (Gina)
Tel: +86 15957120259
Email: gina.wang@sunderland.ac.uk

SHENZHEN CONTACT POINT

Robin Ling
Tel: +86 13823684490
Email: robin.ling@sunderland.ac.uk

HONG KONG

UNIVERSITY OF SUNDERLAND IN HONG KONG

1/F, Centre Point
181-185 Gloucester Road
Wan Chai, Hong Kong
Tel: +852 2992 0133
Email: enquire@sunderland.edu.hk

INDO CHINA OFFICE

Amy Phuong
Email: amy.do@sunderland.ac.uk

SOUTH EAST ASIA

SOUTH EAST ASIA OFFICE

Suite A-07-09, Empire Tower 1
Empire Subang
Jalan SS/16-1
47500 Subang Jaya
Selangor, Malaysia
Tel: +603 5632 5873 / +603 5632 4873
Email: malaysia@sunderland.ac.uk

SOUTH ASIA

SOUTH ASIA OFFICE

University of Sunderland South
Asia Office / India 3rd floor
Thirath Towers
Rd Number 7, Resham Bagh
Banjara Hills
Hyderabad
Telangana
India 500034
Email queries for India:
india@sunderland.ac.uk
Email queries for Sri Lanka and Nepal:
southasia@sunderland.ac.uk
Tel: +91 40 4852 4391
WhatsApp: +91 70321 36766

BANGLADESH CONTACT POINT

Tel: +92 (0) 51 517 2023 /
+92 (0) 51 517 2052
Email: bangladesh@sunderland.ac.uk

PAKISTAN CONTACT POINT

Tel: +92 (0) 51 517 2023 /
+92 (0) 51 517 2052
Email: pakistan@sunderland.ac.uk

YOUR LOCAL CONTACT

CONTACT THE UNIVERSITY IN YOUR HOME COUNTRY

EUROPE AND EASTERN

MEDITERRANEAN

EUROPE AND EASTERN MEDITERRANEAN OFFICE, ATHENS

11C Dekeleias Avenue
Nea Halkidona 143 43
Athens, Greece

Tel: +30 210 921 2885

Email: europa@sunderland.ac.uk

EUROPEAN REGIONAL OFFICE, CRETE

Alpha Hospitality Consultants
Mrs Sofia Pandi
12 Halepas Street – Mastabas
Heraklion, 71305

Crete, Greece

Tel: 0030 2810 289191

Email: info@alpha-h-c.com

EUROPEAN REGIONAL OFFICE, CYPRUS

Mrs Irene Hadjiantoni
5 Spyrou Kuprianou Avenue
Limassol, 4043

Cyprus

Tel: 00357 25 323080

Email: cyprus@sunderland.ac.uk

MIDDLE EAST AND NORTH

AFRICA

MIDDLE EAST AND NORTH AFRICA CONTACT POINT

Aizhan Omar

Tel: +962 799732885

Email: aizhan.omar@sunderland.ac.uk

AFRICA

NIGERIA SUB/SAHARAN AFRICA CONTACT POINT

John Iyekowa

Tel: +234 803 307 5007

Email: john.iyekowa@sunderland.ac.uk

NORTH AMERICA AND

CANADA

NORTH AMERICA AND CANADA CONTACT POINT

Rami Hijazi

Senior Regional Manager

Tel: +1-647-933-9098

Email: rami.hijazi@sunderland.ac.uk

OR

Tel: +1 647 836 5147

Email: wayne.powell@sunderland.ac.uk



Get More:

“Filming a sketch with Matt Damon and James Corden. On the roof, with a huge crew and one of the biggest stars in the world – and the Hollywood sign in the distance. That felt pretty special.”

JAMES LONGMAN (ABOVE CENTRE)

Media graduate

Former Supervising Producer, *The Late Late Show with James Corden*, USA

“ I wrote to production companies and executives, eventually getting work experience at the BBC on a music show *The O-Zone*. That experience got me an interview at MTV and got my first paid job as an intern.

MTV was a huge learning curve. There wasn't much money, so I got to do a little bit of everything – writing, shooting, lighting, sound, editing, directing, producing. The live shows were great as it was a real thrill to have an idea and then see it on screen two hours later.

Not long after graduating, I bumped into the executive of the *Late Late Show* at the Edinburgh TV festival. I said to him, “if you ever need a producer out there, think of me”. Within two months I was in LA!

Now, I'm in charge of all of the celebrity segments of the *Late Late Show* and I'm lucky enough to work with some of the best talent in the world. We have previously won two Emmy Awards and were nominated again in 2021 for *Friends: The Reunion*. I have done shoots with Tom Cruise, Matt Damon and Ryan Reynolds, to name but a few. James Corden is full of ideas and encourages us to keep pushing things to make them better.

Sunderland was a great learning curve for me. The course was varied and very hands on, and teamwork was encouraged – and that's still key to what I do today. ”

THINK COURSE
THINK CAREER
THINK SUNDERLAND

Scan to visit our website:



ONLINE INTERNATIONAL OPEN DAYS

You'll receive a warm welcome at our online open days, where you can learn about our courses, listen to our expert academics during live talks, take part in Q&A sessions, chat to current students, explore our facilities and find out what the University really has to offer. Register for our next online International Open Day at: sunderland.ac.uk/open-days

If you can't join one of our dates, please visit our Virtual Campus Tour at: sunderland.ac.uk/virtualtour

You are also invited to join our monthly Global Education Forum which features panels of students, academics and industry experts covering a range of topics. Register at: sunderland.ac.uk/study/international/get-ahead-events/

If you would like to know more about studying and student life at the University, our staff and students are available to answer all of your queries.



Please scan to start a conversation with staff or students

To download a copy of the latest version of the international prospectus please visit sunderland.ac.uk/prospectus



University of
Sunderland